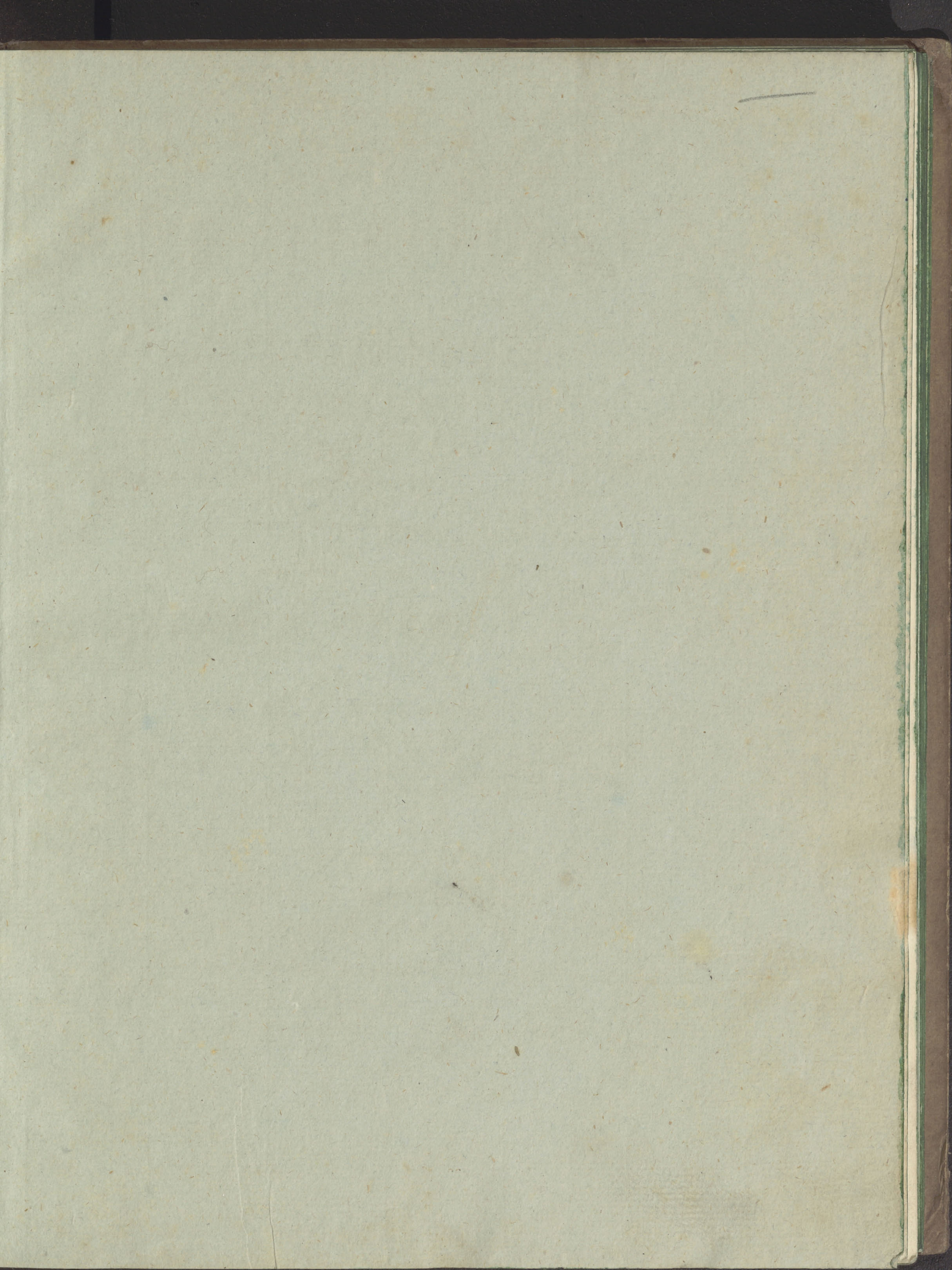


U 97.9



Die
Schmetterlinge

in
Abbildungen nach der Natur *W. W. 2*

mit Beschreibungen

von

Eugenius Johann Christoph Esper.



Herausgegeben

mit Zusätzen

von

Toussaint von Charpentier,

Königl. Preuß. Berg-Hauptmann und Oberbergamts-Direktor, Ritter des rothen Adler-Ordens dritter Classe, Mitglied der Leopoldin. Carolin. Academie der Naturforscher zu Bonn; der Gesellschaft naturforschender Freunde zu Berlin; der mineralogischen zu Dresden und zu Jena; der helvetischen Naturforscher; der schlesischen und lausitzischen Gesellschaft für vaterländischer Cultur und einiger anderen.

Dritter Theil.

Europäische Gattungen.

Erlangen,

im Verlage der Expedition des Esper'schen Schmetterlings- und des
Schreber'schen Säugethierwerkes.



8584

280 962 / 3





Phalaenarum europ:

Attaci. Fig. 1. mas. Fig. 2. foem. Pavonia maior. Lin. Sp. 1. 3.
J. G. Sturm

J. G. Sturm sc



Phalaenarum europ.

Attaci pect. eling. Sp. Lin. 1. Pavonia maior fig. 1. 2. 3. larvae.
aetatis juvenilis. fig. 4. aet. perfectae. fig. 5. Pupa. fig. 6. Chrysalis.

J. G. Klinger sc.



Phalaen: europ:

Attaci pectin: eling Pavonia media. fig. 1 imago maris. fig. 2 foeminae.
fig. 3. larvae iuvenil: 4. adultae. 5. Pupa. 6. 7. chrysalis.

I. G. Klinger sc.



fig. 1.



fig. 2.



Phalaenar . europ:

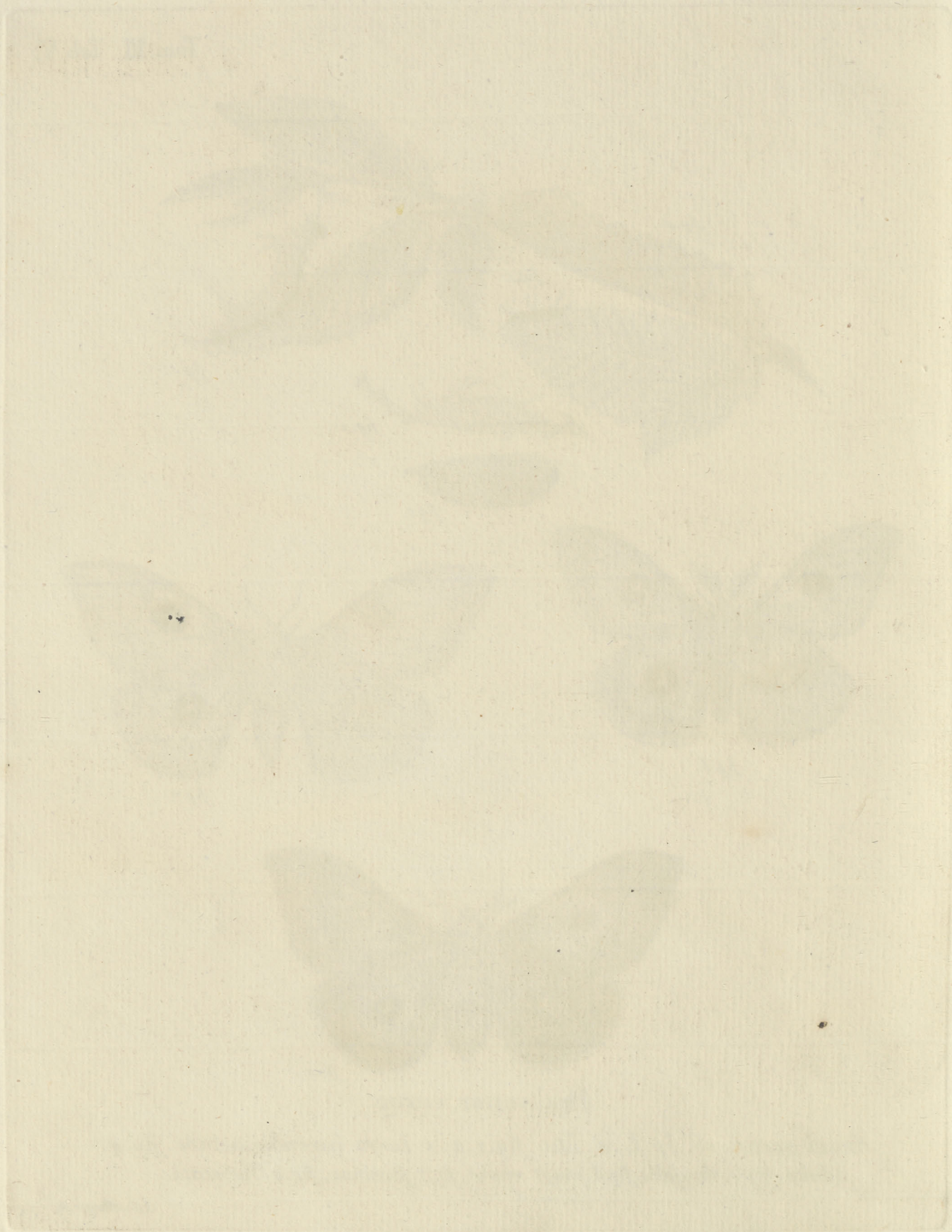
Attaci . pectin: eling. Sp. 7. & Lin: Pavonia minor fig. 1. imago
maris fig. 2. *foem.* fig. 3. *larvae iuven:* fig. 4. *adultae* fig. 5. pupa.
 fig. 6. *chrysalis*.

L. G. Klinger. sc.



Phalaena europaea:

Attaci pectin. el. Sp. L. 8. Tau. fig. 1. 2. 3. larva iuvenilis aetatis. fig. 4. adulta. fig. 5. chrysalis, fig. 6. imago maris, fig. 7. foeminae, fig. 8. Varietatis.





Phalaen: europ.

Attaci Seticor. Spiril. Sp. 17. mundana fig. 1. mar. fig. 2. foem. Bombyces eling. al. revers. Sp. 18. quercifolia. fig. 3. foem. fig. 4. 5. Larvae fig. 6. Pupa. fig. 7. Chrysalis.

I.G. Klinger sc.

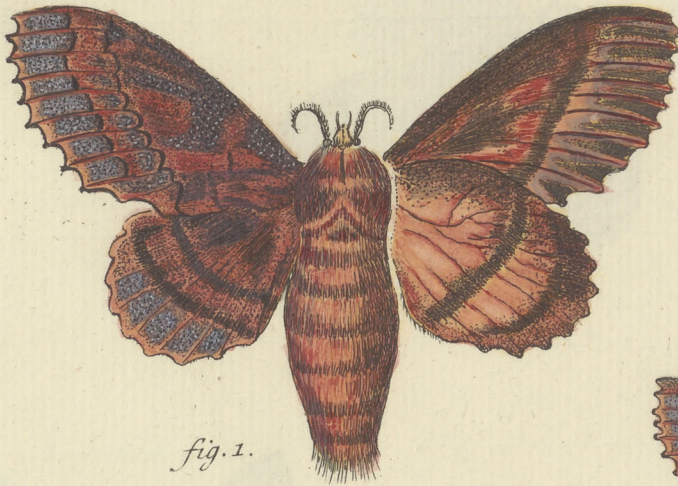


fig. 1.

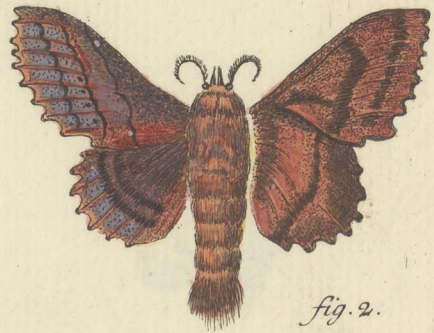


fig. 2.

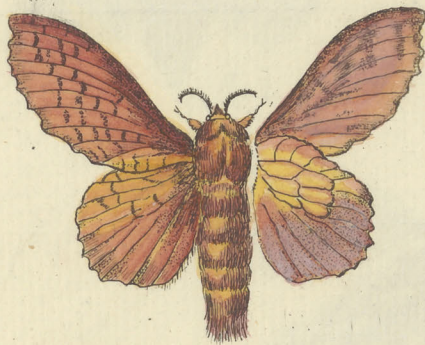


fig. 3.

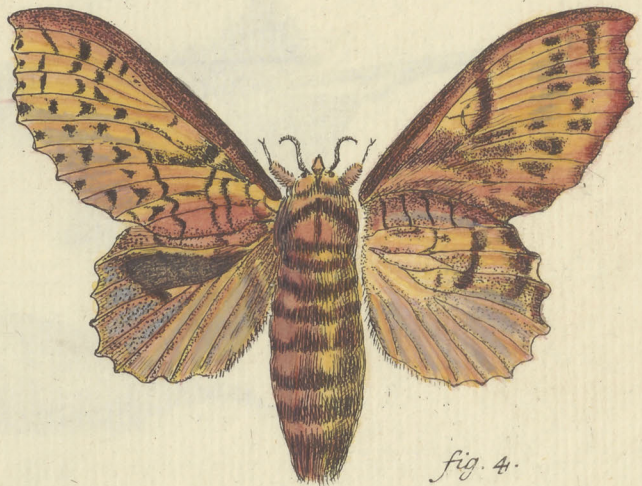


fig. 4.

Phalaen: europ:

Bombyc. eling. al. rev. fig. 1. foem. fig. 2. mas. Quercifolia.

Varietas. fig. 3. mas. fig. 4. foem. Populifolia.



fig. 1.



fig. 2.



fig. 3.



fig. 4.



fig. 5.



fig. 6.

Phal: europ.

Bombyces. eling. al. revers. fig. 1. Populifolia. fig. 2. foem. fig. 3.

mas. Betulifolia. fig. 4. larva fig. 5. Pupa. fig. 6. chrysal. eiusd.

I.G. Klinger sc.





fig. 1.



fig. 2.



fig. 3.



fig. 4.



fig. 5.



fig. 6.



fig. 7.

Phal: europ:

Bombyces. el. al. rev. fig. 1. mas. fig. 2. foem. Ilicifolia. Lin. sp. 19.
fig. 3. pupa. fig. 4. Chrys. eiusd. fig. 6. mas. fig. 7. foem. Taraxaci.



fig. 1.

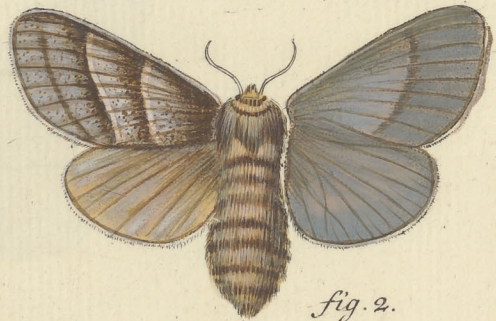


fig. 2.



fig. 3.



fig. 4*

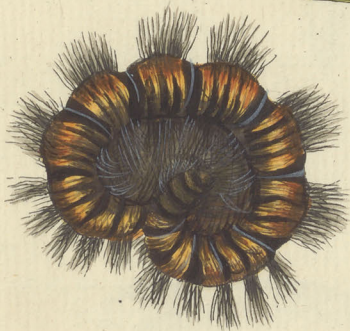


fig. 4.



fig. 5.



fig. 6.

Phalaen. europ.

Bombyces eling. al. rev. fig. 1. mas. fig. 2. foem. *Rubi. Lin. Sp. 21.* fig. 3. Larva.
fig. 4.*. *Eadem juvenili aetate.* fig. 5. pupa. fig. 6. Chrysal.

I. & Klinger sc.

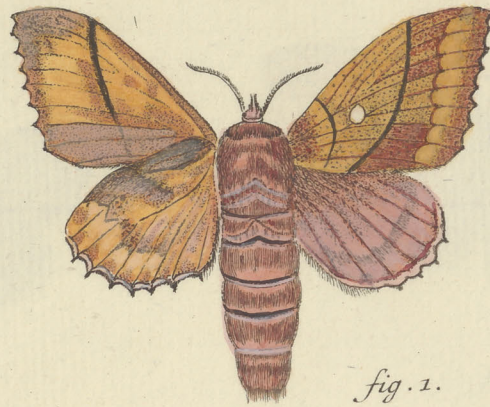


fig. 1.



fig. 2.

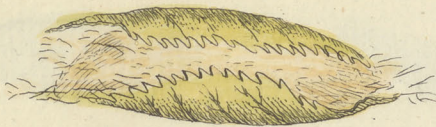


fig. 3.



fig. 4.

Phal: europ:

Bombyces ding. al. rev. fig. 1. *Pruni* Lin. Sp. 22. fig. 2. larva.
fig. 3. pupa. fig. 4. chrysal.

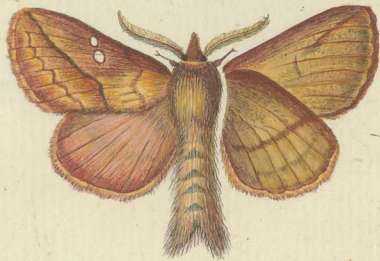


fig. 1.

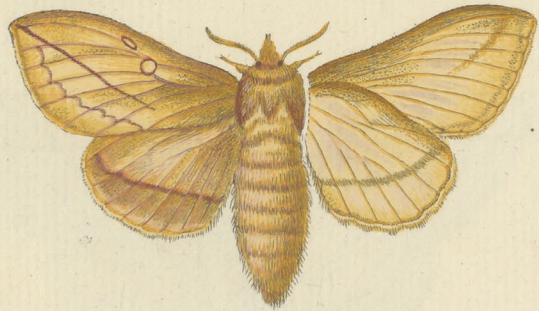


fig. 2.



fig. 3.



fig. 5.



fig. 4.

Phalaen: europ.

Bombyces eling. al. rev. fig. 1. mas. fig. 2. foem. Potatoria Lin. Sp. 23. fig. 3. Larva fig. 4. pupa. fig. 5. chrysf.



fig. 1.

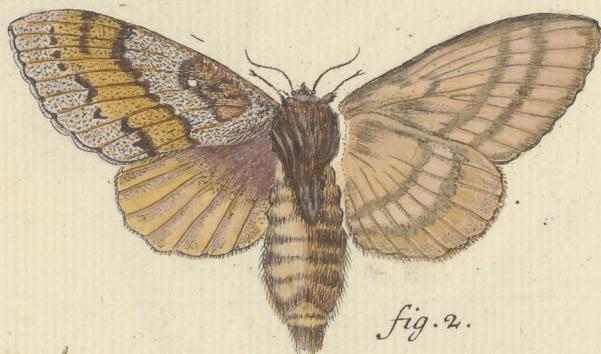


fig. 2.

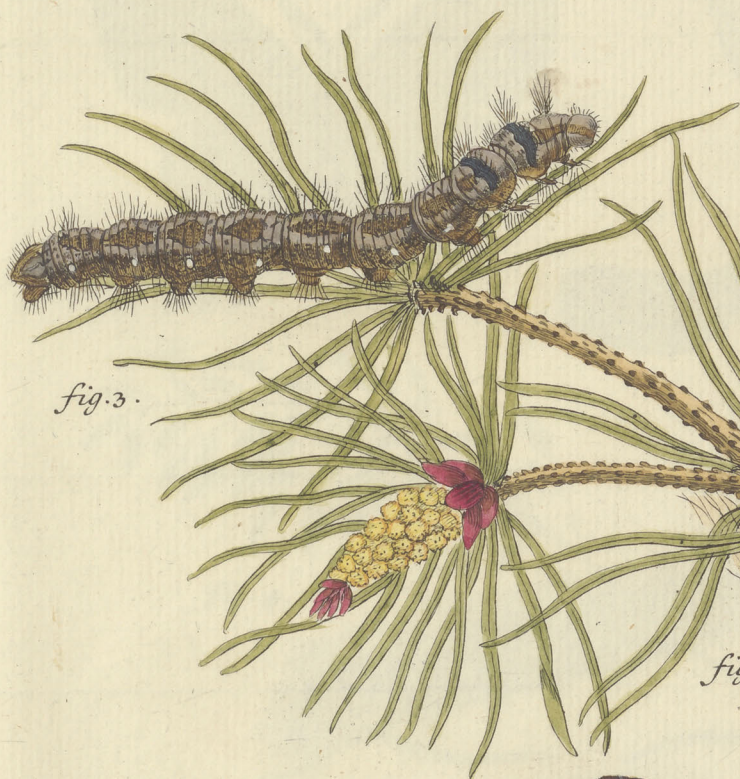


fig. 3.



fig. 4.



fig. 5.

fig. 6.

Phalaenar. europ.

Bombyces eling. al. revers. Pini. fig. 1. mas. fig. 2. foem. fig. 3. 4. larvae.
fig. 5. pupa. fig. 6. chrysalis.



Phalaen: europ:

Bombyc. eling. al. revers. fig. 1. Pini. variet. fig. 2. mas. fig. 3. foem. Quercus.

Lin. Sp. 25. fig. 4. Larva. fig. 5. Pupa. fig. 6. Chrysal.

I. G. Klinger sc.



fig. 1.



fig. 2.



fig. 3.



fig. 4.

Phalaen europ:

Bombyc. eling. al. rev. fig. 1. mas. fig. 2. foem. Quercus Variet.
 fig. 3. mas. fig. 4. foem. Durneti. Lin. Sp. 26.
 Gussakoff.

I. G. Klinger sc.



fig. 1.



fig. 2.



fig. 3.



fig. 4.



fig. 6.

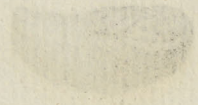
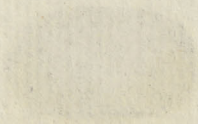
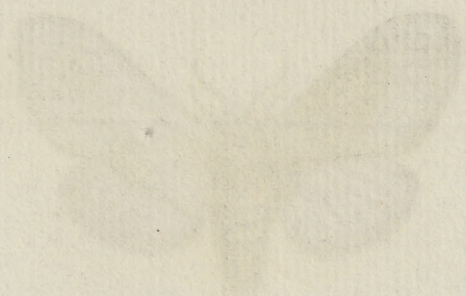


fig. 5.

Phal: europ:

Bombyc. eling. al. rev. Trifolii. fig. 1. mas. fig. 2. foem. fig. 3. Larva aetate adulta. fig. 4. ^{juv. aet.} Larva aet. juvenili. fig. 5. Pupa. fig. 6. Chrysal.

I. G. Klinger sc.



17. 11. 11. 11.

17. 11. 11. 11.



fig. 1.



fig. 2.

fig. 3.

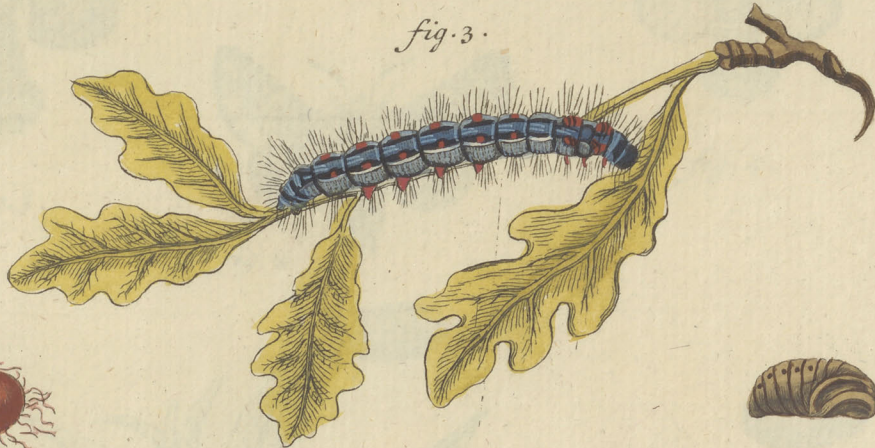


fig. 4.



fig. 5.



fig. 6.



fig. 7.

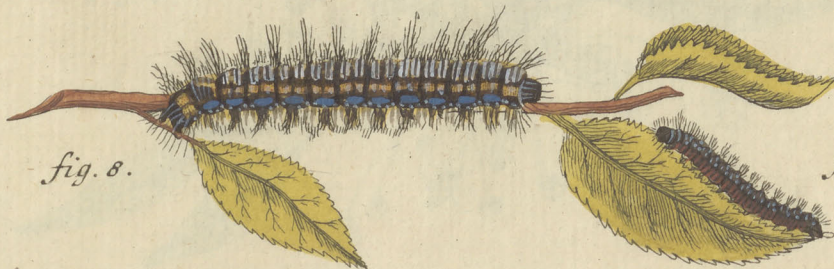


fig. 8.

fig. 9.



Phalaen: europ:

Bombyces eling. al. rev. Catax Lin. Sp. 27. fig. 1. mas. fig. 2. foem. fig. 3. larva.
fig. 4. pupa. fig. 5. chryf. Lentipes. fig. 6. mas. fig. 7. foem. fig. 8. 9. larvae.

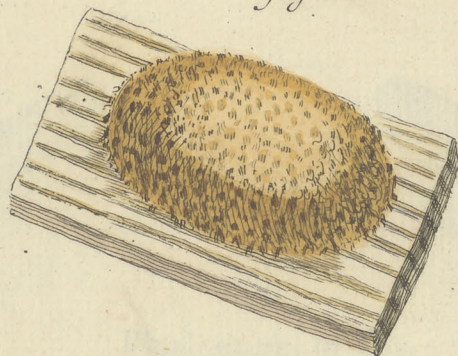
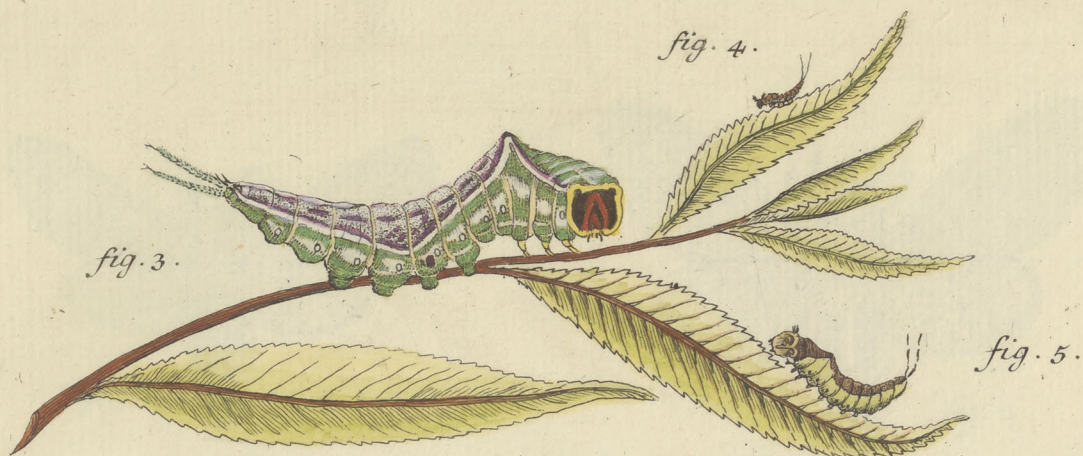


Phalaen: europ:

Bombyx. ling. al. revers. fig. 1. Lentipes. foem. Var. fig. 2. mas. fig. 3. foem. fig. 4. Variet. Ianestris. Lin. Sp. 28. fig. 5. larva. fig. 6. 7. pupa. fig. 8. cristal.

Wm. R. R. R.

I. G. Klinger sc.



Phalaen: europ:

Bombyc. el. al. rev. Vinula. Lin. Sp. 29. fig. 1. foem. fig. 2. maris variet.
fig. 3. 4. 5. larvae. fig. 6. pupa. fig. 7. chrysal.

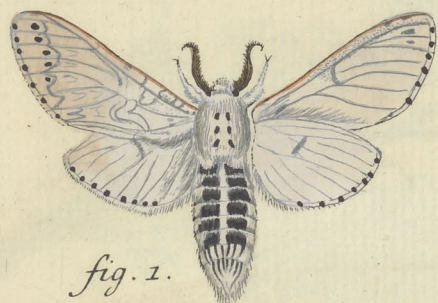


fig. 1.

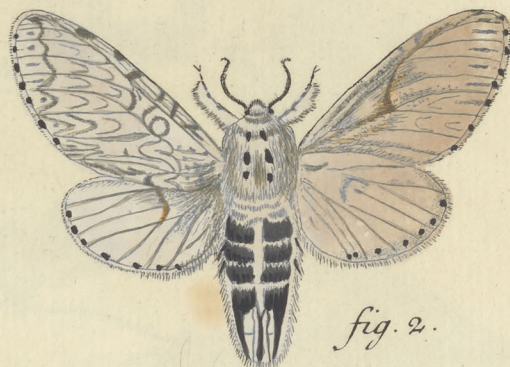


fig. 2.



fig. 3.



fig. 4.



fig. 5.



fig. 6.



fig. 7.

Phalaenar: europ:

Bombyc. eling. al. rev. Erminea. fig. 1. mas. fig. 2. foem. Sp. Lin. 51.

Furcula. fig. 3. larva. fig. 4. pupa. fig. 5. chryf. fig. 6. mas. fig. 7. foem. var.

J. K. 9.

I. G. Klinger sc.



Phalaena europ.

Bombyx ling. al. revers. Sp. 30. Lin. Fagi. fig. 1. 2. 3. larvae. fig. 4. pupa. fig. 5. chrysf. fig. 6. mas. fig. 7. foem.

fig. 1.



fig. 2.

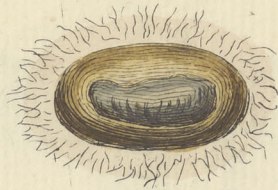


fig. 4.



fig. 5.



fig. 3.

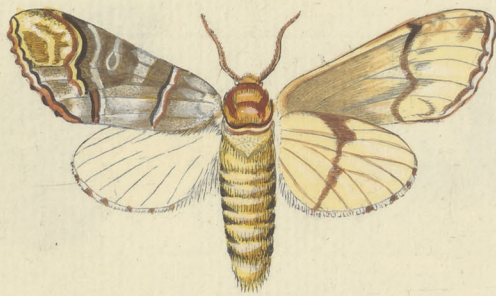


fig. 6.



Phalaen: europ:

Bombyc. ding. al. rev. Milthauferi fig. 1. Larva. fig. 2. folliculus. fig. 3. chrysalis. fig. 4. foem. fig. 5. varietas. fig. 6. antennae maris.



Phalaen: europ:

Bombyx. eling. al. rev. Sp. 31. Lin. Bucephala. fig. 1. 2. larvae.

fig. 3. chrysal. Lunigera. fig. 5. mas. fig. 6. foem. I. G. Klinger sc.

fig. 1.

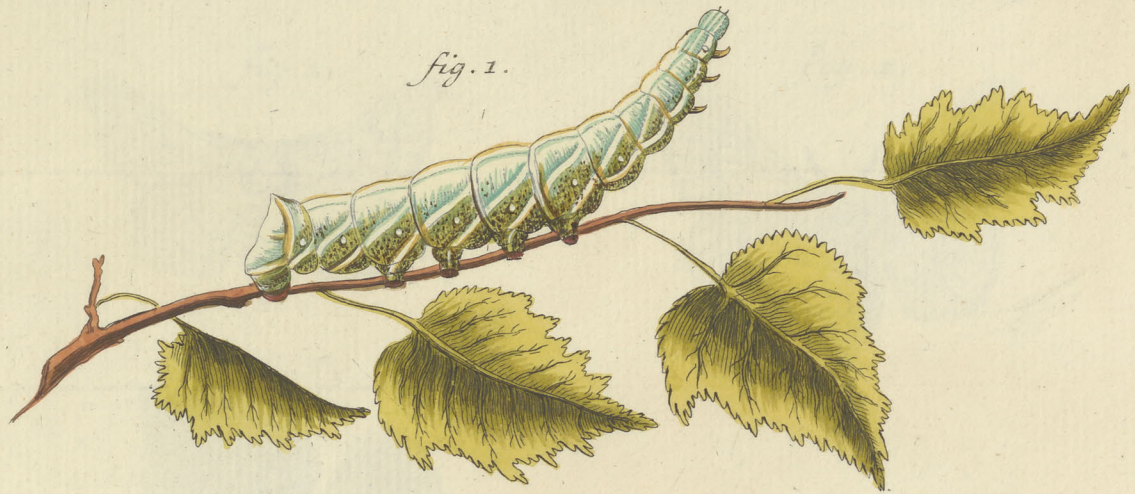


fig. 4.

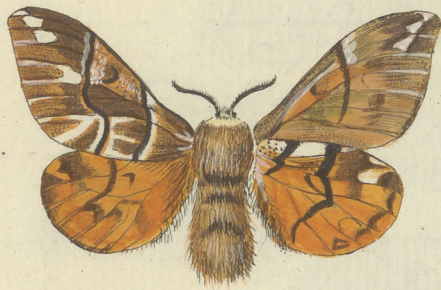


fig. 2.



fig. 3.



fig. 5.



Phalaen: europ:

Bombyc. eling. al. revers. Sp. Lin. 32. Versicolora. fig. 1. larva. fig. 2. pupa.
fig. 3. chryf. fig. 4. mas. fig. 5. foem.

I. G. Klinger sc.



Phalaen europ

Bombyc. eling. al. revers. Lin. Sp. 33. Mori. fig. 1. mas. fig. 2. foem. fig. 3. 4. larva. fig. 5. chrysf. foem. fig. 6. chrysf. mas. fig. 7. 8. folliculi.



Phalaena: europ.

*Bomb. el. al. rev. Lin. Sp. 34. Populi. fig. 1. mas. fig. 2. foem
fig. 3. 4. 5. 6. larvae. fig. 7. folliculus. fig. 8. chrysal*



fig. 1.



fig. 2.



fig. 3.



fig. 4.

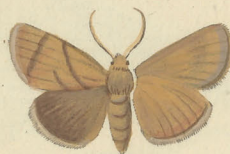


fig. 5.



fig. 6.

fig. 7.



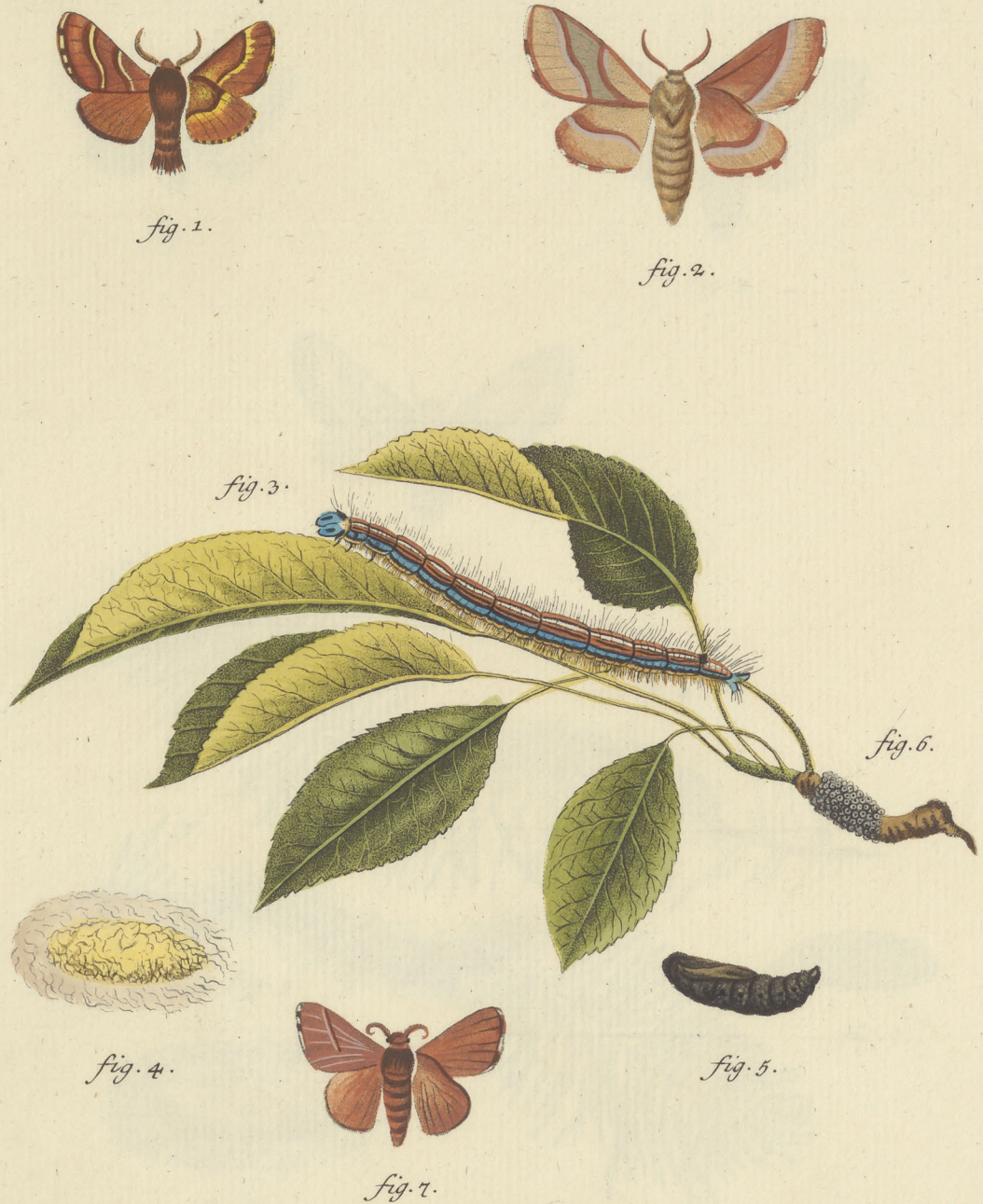
fig. 8.



fig. 9.

Phal. europ:

Bomb. eling. al. rev. fig. 1. mas. fig. 2. foem. Franconica. fig. 3.
mas. fig. 4. Variet. maris. fig. 5. foemina. ^{Limacodes} fig. 6. 7.
larvae. fig. 8. folliculus. fig. 9. chrysalis.



Phal: europ:

Bomb. eling. al. rev. fig. 1. mas. fig. 2. foem. Neustria. Sp. Lin. 35.
fig. 3. Larva. fig. 4. folliculus. fig. 5. chrysalis. fig. 7. Varietas.

I. C. Bock sc.



fig. 1.



fig. 2.



fig. 3.



fig. 4.

fig. 5.

fig. 7.

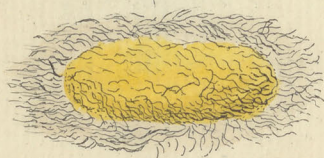


fig. 6.

Phalaen:europ:

Bomb. el. al. rev. fig. 1. mas. fig. 2. foem. fig. 3. Variet. Castrensis. Lin. Sp. 36.
fig. 4. 5. larvae. fig. 6. follic. fig. 7. chrysal.



fig. 1.



fig. 2.



fig. 3.

fig. 4.

fig. 5.



fig. 6.



fig. 7.

Phalaen: europ:

Bomb. eling. al. rev. fig. 1. mas. fig. 2. foem. procesionea. Lin. Sp. 37. fig. 3. larva. fig. 4. follic. fig. 5. chrysal. fig. 6. mas. fig. 7. foem. Pityocampa.

Ed. f. p. 1. p. 1. p. 1.

I. C. Bock sc.



fig. 1.

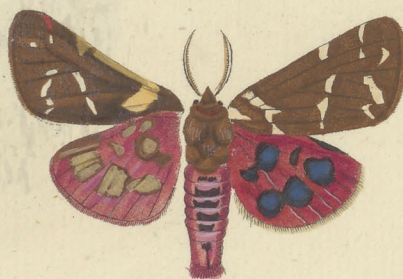


fig. 2.



fig. 4.

fig. 3.

fig. 5.

Phalaen: europ:

Bomb. el. al. depr. dorso. laevi. Lin. Sp. 38. Caia. fig. 1. foem.
fig. 2. maris Variet. fig. 4. follic. fig. 5. chrysal.



fig. 1.

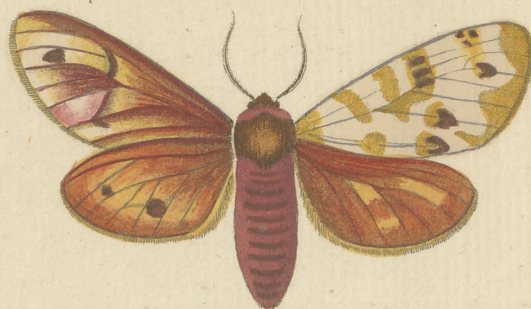


fig. 3.



fig. 2.

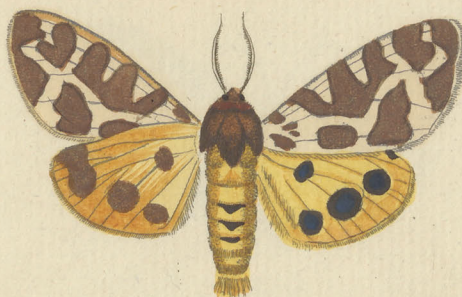


fig. 4.

Phalaenar europ:

Bomb. el. al. depr. dors. laev. fig. 1. 2. 3. 4. Caiae Varietates.

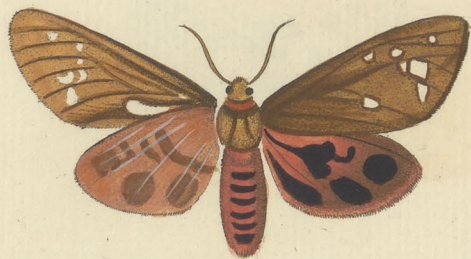


fig. 1.



fig. 2.



fig. 3.

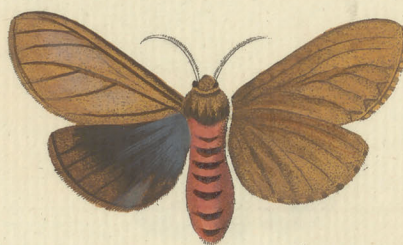


fig. 4.

Phalaen:europ:

Bomb. cl. al. depr. dorso. laevi. Caiae. Varietates

Tab. praeantecedentis.



fig. 1.



fig. 2.



fig. 3.



fig. 4.



fig. 5.

Phal. europ.

Bomb. el. al. defl. dors. laev. fig. 1. pudica. fig. 2. casta.
fig. 3. fasciata. fig. 4. mas. fig. 5. foem. maculosa.

fig. 1.



fig. 2.

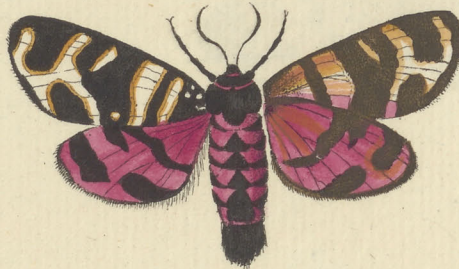


fig. 3.



fig. 4.



Phalaen: europ:

Bomb. el. al. depr. dors. laev. Spec. Lin. 40. Hebe. fig. 1. mas.
fig. 2. foem. fig. 3. larva. fig. 4. chrysal.

fig. 1.

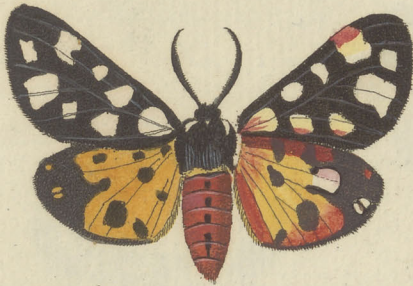


fig. 2.

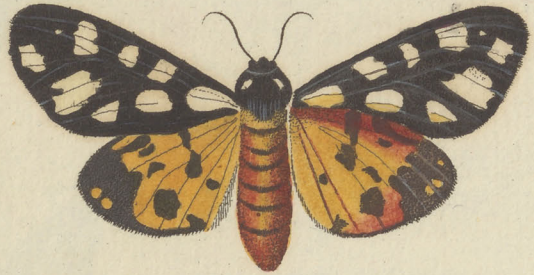


fig. 3.



fig. 4.



fig. 5.

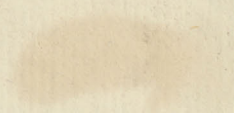
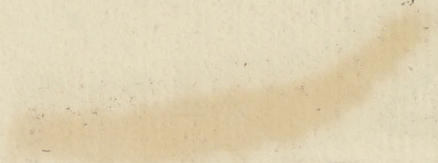


fig. 6.



Phalaenar: europ:

*Bomb. el. al. depr. dorf. laev. Sp. Lin. 41. villica. fig. 1. mas. fig. 2. foem.
fig. 3. 4. larvae. fig. 5. follic. fig. 6. chrysf.*





Phalaen. europ.

Bomb. d. al. depr. dors. laev. Lin. Sp. 42. Plantaginis. fig. 1. form. fig. 2. mas. fig. 3. 4. 5. Varietates. fig. 6. 7. larvae. fig. 8. chrysf.



fig. 1.

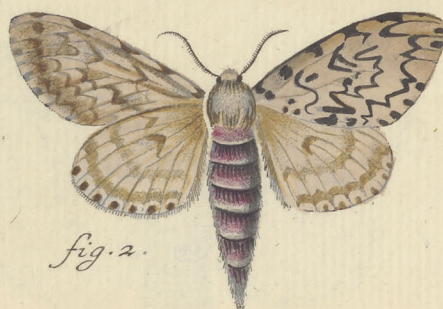


fig. 2.

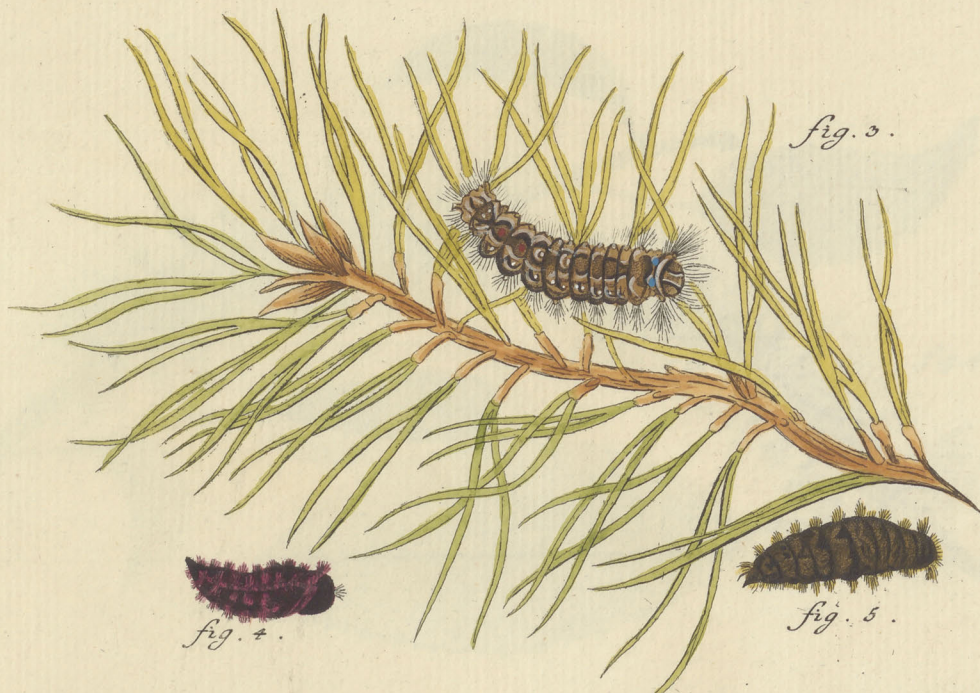


fig. 3.



fig. 4.



fig. 5.



fig. 6.

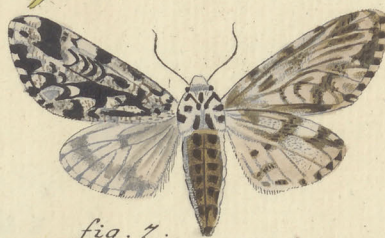


fig. 7.

Phalaenar. europ.

Bomb. el. al. dep. dors. laev. Lin. Sp. 43. Monacha.
fig. 1. mas. fig. 2. foem. fig. 3. larva. fig. 4. 5. chrysalides.
fig. 6. Varietas. maris. fig. 7. Coenobita.



fig. 1.



fig. 2.



fig. 6.

Phalaenar. europ.

Bomb. el. al. dep. dorf. laev. Lin. Sp. 44. Dispar. fig. 1. mas. fig. 2. foem. fig. 3. 4. larva. fig. 5. chrysal. fig. 6. maris. aberratio singularis.

I. C. Bock sc.

fig. 1.

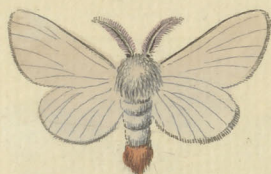


fig. 2.



fig. 3.



fig. 4.



fig. 5.



fig. 6.



fig. 7.



Phalaenar: europ:

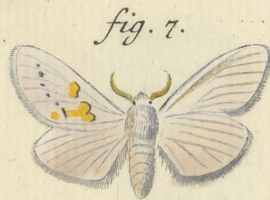
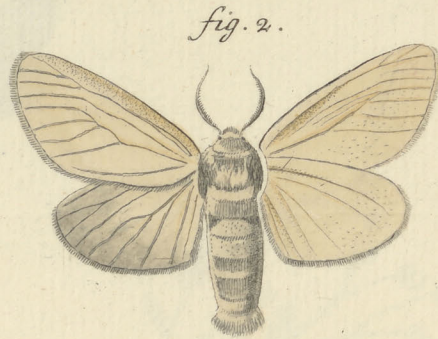
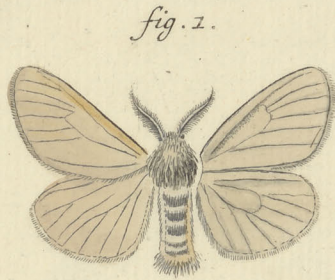
Bomb. el. al. dep. dors. laev. Lin. Sp. 45. *Chrysorrhoa*. fig. 1. mas. fig. 2. foem.
fig. 3. larva. fig. 4. folliculus. fig. 5. chrysal. fig. 6. *Auriflua*. fig. 7. larva.

Chrysorrhoa *Auriflua*



Phalaenar: europ:

Bomb. el. al. defl. dorso laev. fig. 1. mas. fig. 2. foem. V nigrum.
fig. 3. 4. larvae. fig. 5. 6. drysalides.



Phalaenar: europ:

Bomb. el. al. dep. dorf. laev. Lin. Sp. 46. Salicis. fig. 1. mas. fig. 2. foem.
 fig. 3. 4. larvae. fig. 5. 6. chrysalides. fig. 7. bicoloria.



Phalaen: europ:

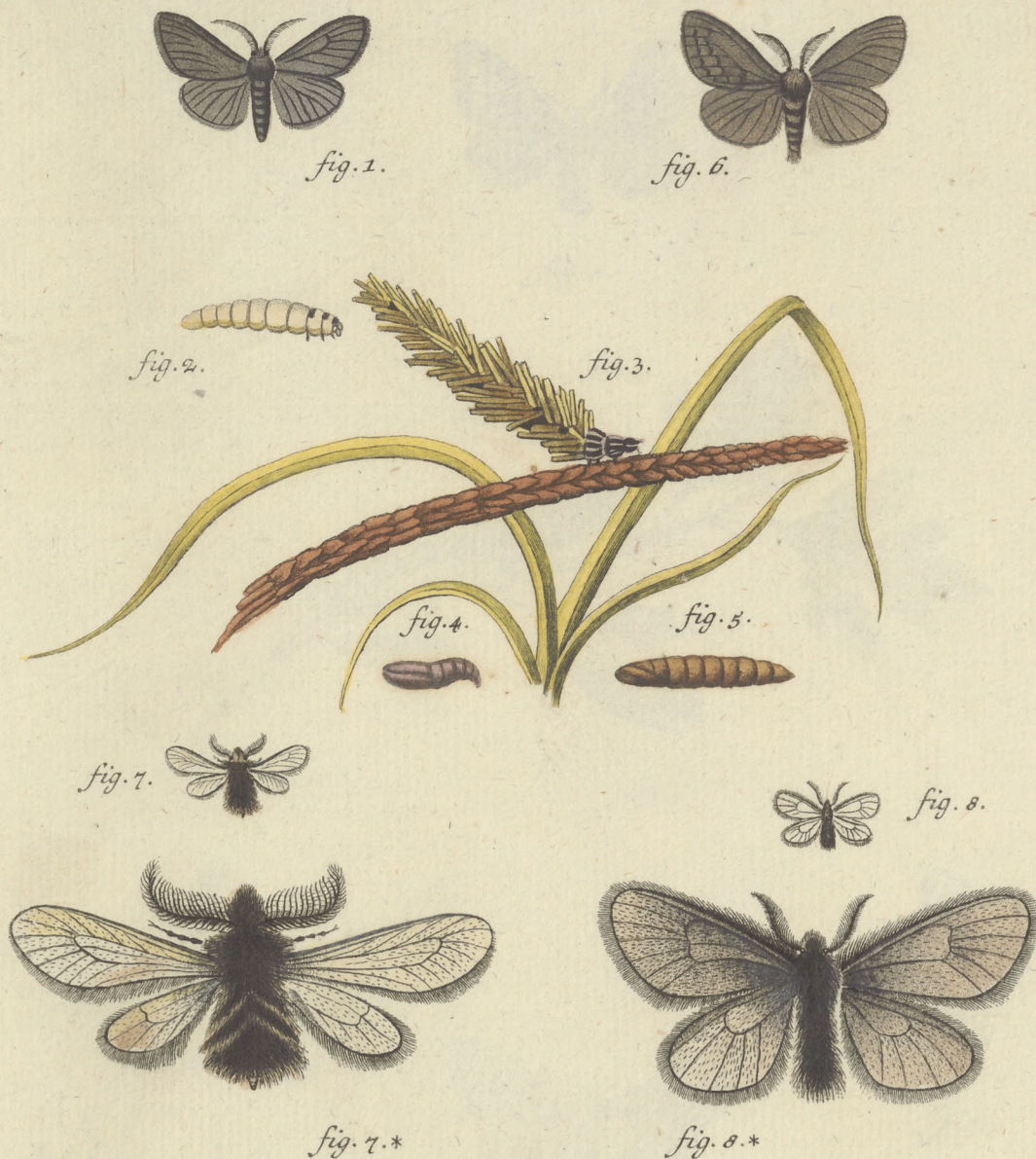
Bomb. d. al. dep. dorf. laev. Lin. Sp. 47. mendica. fig. 1. mas. fig. 2. foem.
 fig. 3. 4. 5. 6. 7. larvae. diversae. aetatis. fig. 8. pupa. fig. 9. chrys. fig. 10. pupillata.



Phalaenar: europ:

Bomb. el. al. defl. dorf. laev. fig. 1. foem. fig. 2. mas. Luctifera. fig. 3. larva.
fig. 4. follic. fig. 5. chrysal. fig. 6. Sp. Lin. 66. Morio. mas. fig. 7. foemina.

Phalaena europaea



Phalaen: europ:

Bomb. ding. al. deflex. dors. laev. Vestita. fig. 1. mas. fig. 2. foem. aptera. fig. 3. larva folliculata. fig. 4. Chrysalis maris. fig. 5. Chryf. foeminae. fig. 6. Detrita mas. fig. 7. Atra. Lin. Sp. 49. fig. 7. repraesentatio maior. fig. 8. Pulla. fig. 8*.*
repraes. maior.



fig. 5.



fig. 1.

fig. 2.



fig. 4.



fig. 6.



fig. 3.

Phalaen: europ:

Bomb. el. al. depr. dorf. laev. Crataegi. fig. 1. Larva. fig. 2. folliculus.
fig. 3. mas. fig. 4. foemina. fig. 5. Hermaphroditus. fig. 6. Variet. foem.

I. F. Volckart sc.



Fig. 1.

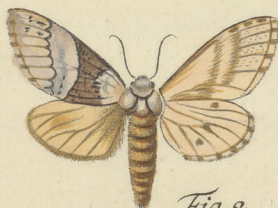


Fig. 2.



Fig. 3.



Fig. 4.



Fig. 5.



Fig. 7.



Fig. 6.

Phalaen: europ:

Bomb. el. al. depr. dorso laevi. Trimacula. fig. 1. mas. fig. 2. foem.
fig. 3. var. maris. Roboris. fig. 4. mas. fig. 5. foem. fig. 6. larva.
fig. 7. chrysalis.



fig. 1.



fig. 2.



fig. 3.



fig. 4.



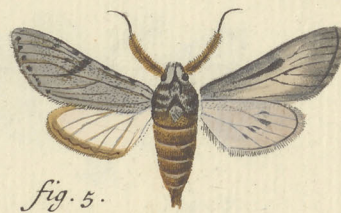
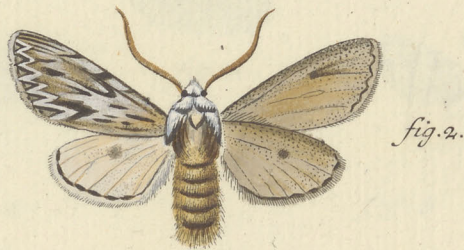
fig. 5.



fig. 6.

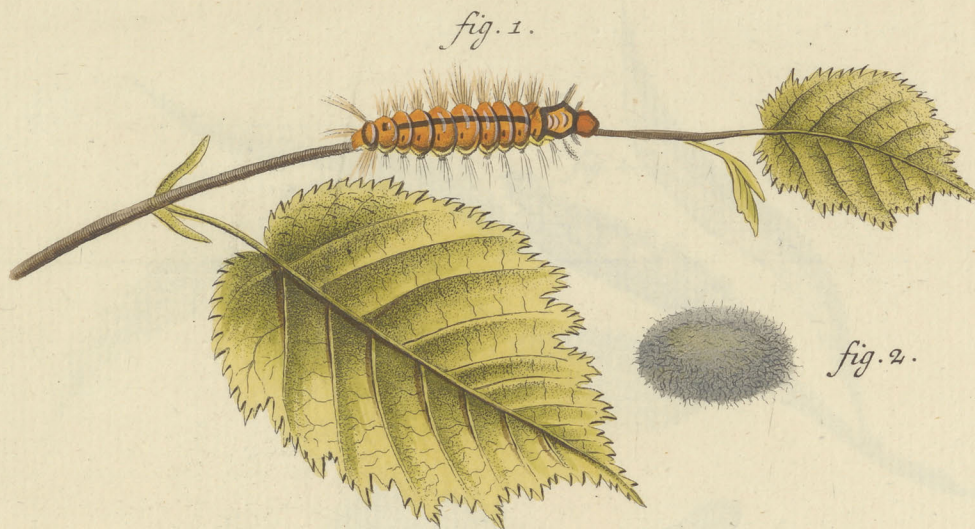
Phalaenar: europ:

Bomb. el. al. depr. dorf. laevi. fig. 1. mas. fig. 2. foem. obliterated.
fig. 3. mas. fig. 4. foem. crenata. fig. 5. mas. fig. 6. foem. ferruginea.
fig. 1. mas. fig. 2. foem. obliterated.
fig. 3. mas. fig. 4. foem. crenata. fig. 5. mas. fig. 6. foem. ferruginea.



Phalaenar. europ:

Bomb. d. al. defl. dorf. l. Sphinx. fig. 1. Larva. fig. 2. Ph. mas. fig. 3. Chrysal. fig. 4. Cassinia. mas. fig. 5. Variet.



Phalaen: europ:

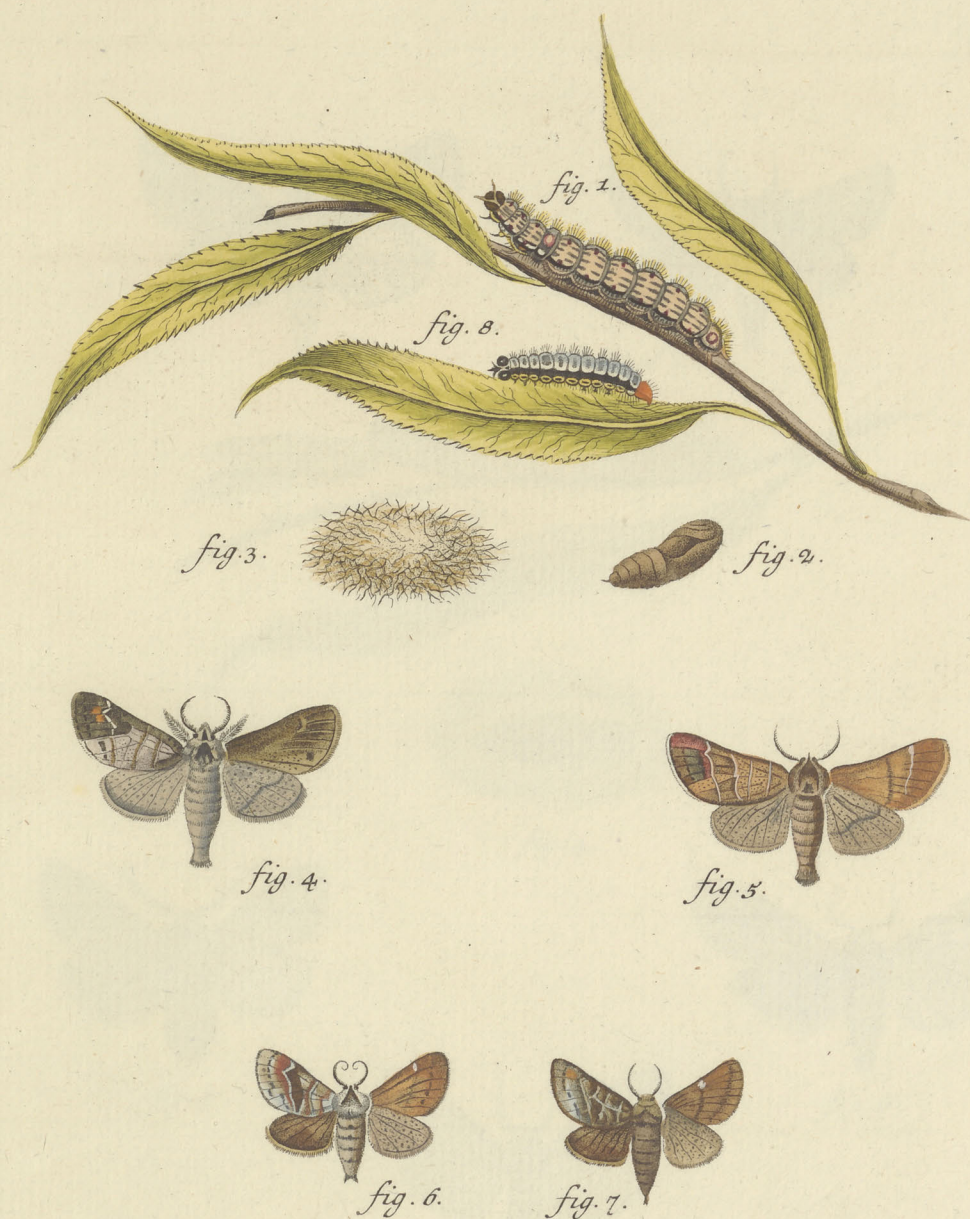
Bomb. el. al. defl. dorso. laevi. Lin. Sp. 50. Coryli. fig. 1. larva.

fig. 2. follic. fig. 3. chrysalis. fig. 4. mas. ^{Duf. & Schumacher} fig. 5. foem. fig. 6.

Plumigera mas. fig. 7. maris Variet.

Endruet & Schup.

I. C. Bock sc.



Phalaen: europ:

Bomb. eling. al. defl. dorso. l. Lin. Sp. 52. Curtula. fig. 1. larva. fig. 2.
Chrys. fig. 3. follic. fig. 4. Phal. mas. fig. 5. Anachoreta. mas. fig. 6.
Reclusa. mas. fig. 7. Variet. fig. 8. larva.
Unim -

I. C. Bock sc.

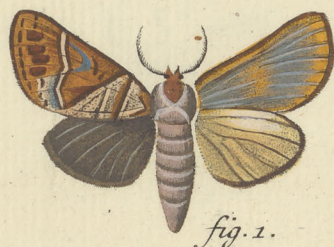


fig. 1.



fig. 2.

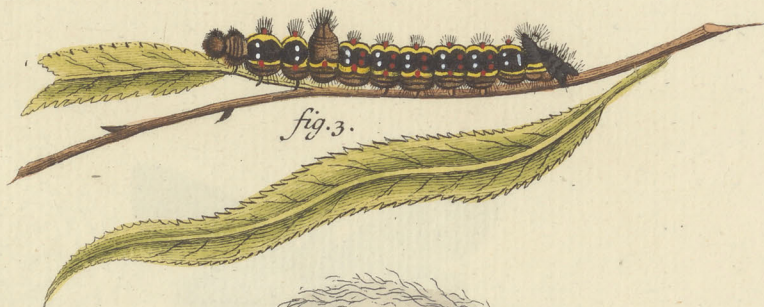


fig. 3.

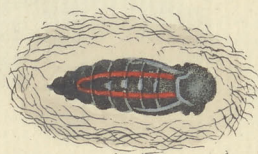


fig. 4.

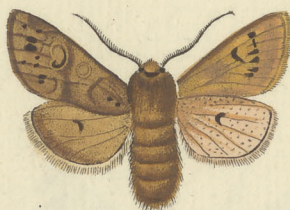


fig. 5.

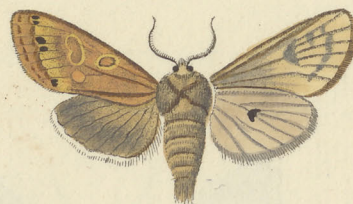


fig. 6.

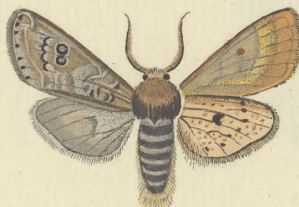


fig. 7.

Phalaen: europ:

Bomb. d. al. dep. d. laevi. Lin. S. N. Sp. Anastomosis. fig. 1. foem.
fig. 2. mas. fig. 3. larva. fig. 4. chrysal. in follic. fig. 5. mas. fig. 6. foem.
Munda. fig. 7. Donasa.



fig. 1.



fig. 2.



fig. 3.



fig. 5.

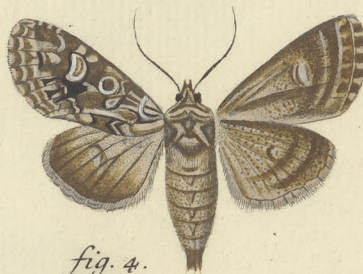


fig. 4.

Phalaen: europ:

Bomb. el. al. depr. dorso cristato. fig. 1. mas. fig. 2. foem. Argentina.
fig. 3. Flammea. fig. 4. mas. fig. 5. foem. Vestigialis.

Abm. m. fl. 6y

Ant. m. p. 10

I. C. Bock sc.



Phalaen: europ:

Bomb. el. al. depr. dorf. crist. Lin. Sp. 54. Pudibunda. fig. 1. mas. fig. 2. foem. fig. 3. 4. 5. larvae. fig. 6. follic. fig. 7. chrysalis.



fig. 1.

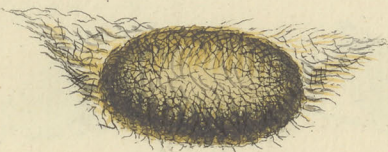


fig. 2.



fig. 3.

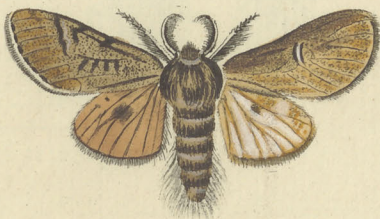


fig. 4.

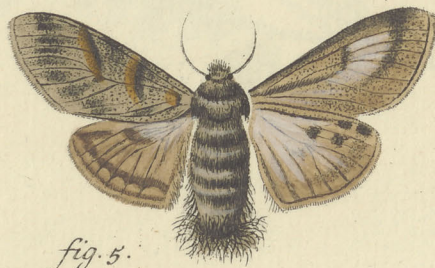
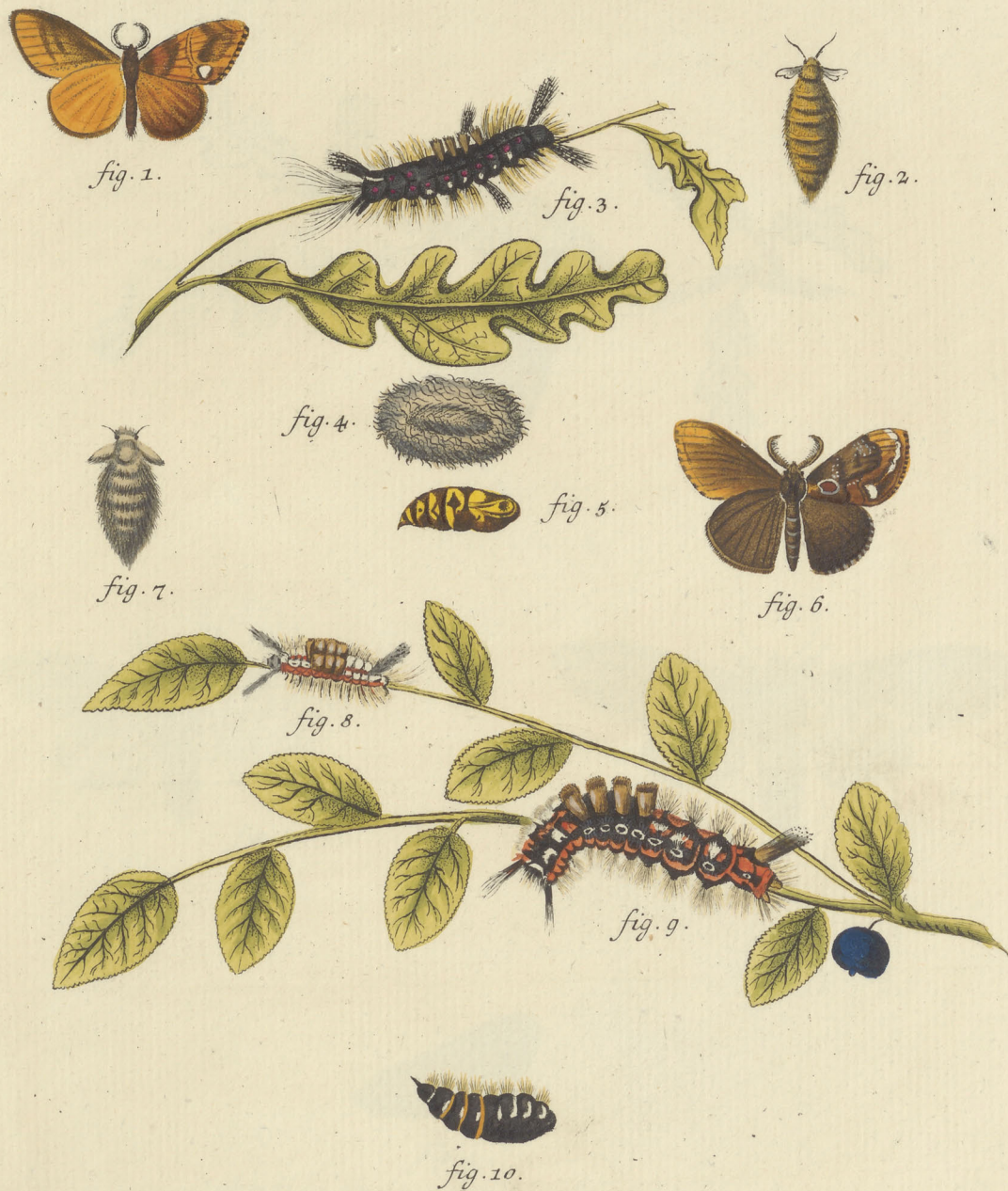


fig. 5.

Phalaen: europ:

Bomb. el. al. depr. dorso crist. Lin. Sp. 55. Fascelina. fig. 1. larva.
fig. 2. follic. fig. 3. dryf. fig. 4. mas. fig. 5. foem.



Phalaen: europ:

Bomb. al. depr. dorso. crist. Lin. Sp. 56. Antiqua. fig. 1. mas. fig. 2. foem. aptera. fig. 3. larva. fig. 4. follic. fig. 5. Chrysf. Lin. Sp. 57. Gonostigma. fig. 6. mas. fig. 7. foem. apt. fig. 8. 9. larvae. fig. 10. Chrysf.

I. C. Bock sc.



fig. 1.



fig. 2.



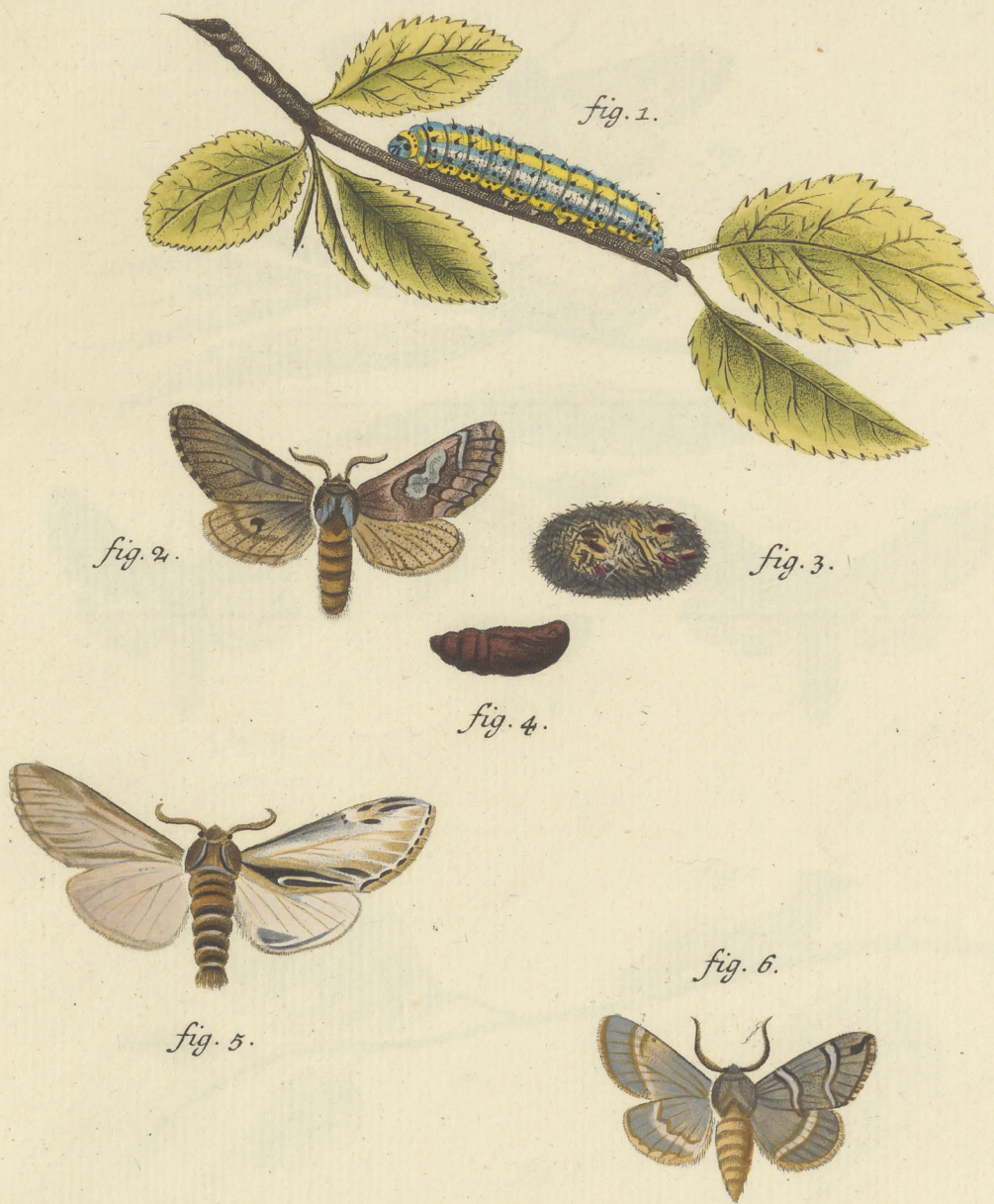
fig. 3.



fig. 4.

Phalaen: europ:

*Bomb. el. al. depr. dorf. crist. Trepida. fig. 1. larva. fig. 2. mas. fig. 3. foem.
fig. 4. chrysalis.*



Phalaen: europ:

Bomb. el. al. dep. d. crist. Lin. Sp. 59. Caeruleocephala. fig. 1. larva.
fig. 2. mas. fig. 3. follic. fig. 4. chrysal. fig. 5. Dictaea. mas. fig. 6.
Velitaris.

I. C. Bock sc.



Phalaen: europ:

Bomb. el. al. depr. dorso. crist. Sp. Lin. 62. Ziczac. fig. 1. mas. fig. 2. larva. fig. 3. follic. fig. 4. chrysal. fig. 5. mas. fig. 6. foem. Dromedarius. fig. 7. 8. larvae. fig. 9. chrysf.

I. C. Bock sc.

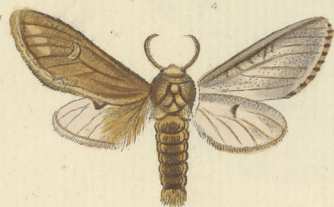


fig. 1.



fig. 2.



fig. 3.



fig. 4.

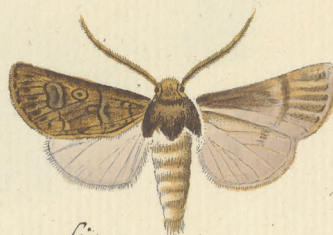


fig. 5.

Phalaen: europ:

Bomb. el. al. defl. dorso. crist. fig. 1. Tritophus. mas. fig. 2. foem.

fig. 3. Varietas. fig. 4. Oleagina. fig. 5. Segetum.

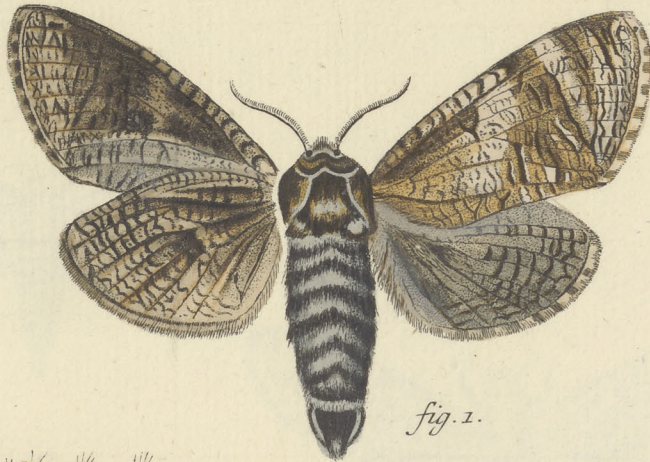


fig. 1.

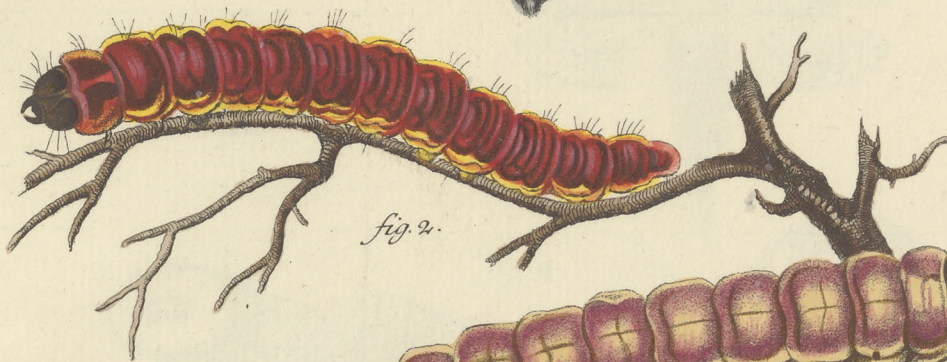


fig. 2.

fig. 3.

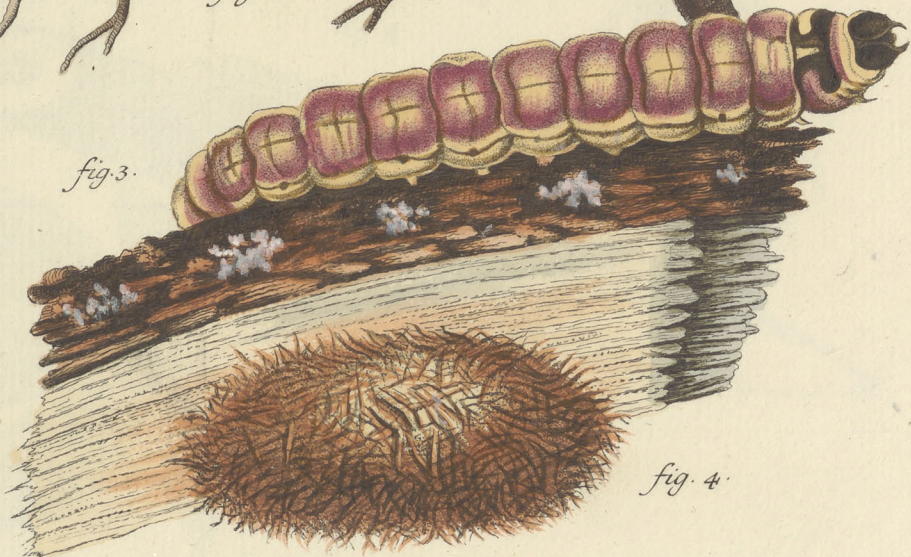


fig. 4.

fig. 5.



fig. 6.



Phalaen: europ:

Bomb. et. al. depr. dorso. crist. Lin. Sp. 63. Cosfus. fig. 1. mas. fig. 2. 3.
larvae. fig. 4. folliculus. fig. 5. 6. chrysalides.



Phalaen: europ:

Bomb. el. dorso laevi. Aesculi. Lin. Sp. Noct. 83. fig. 1. mas. fig. 2. foem.
fig. 3. drysalis. fig. 4. larva. fig. 5. Antennae maris, fig. 6. antennae foeminae,
fig. 7. ensis foeminae repraesentationes maiores.



fig. 1.

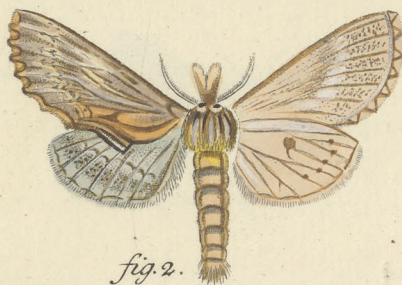


fig. 2.



fig. 3.

fig. 4.



fig. 5.

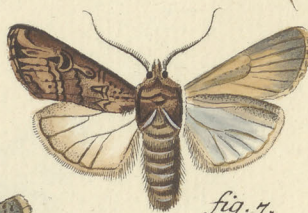


fig. 6.

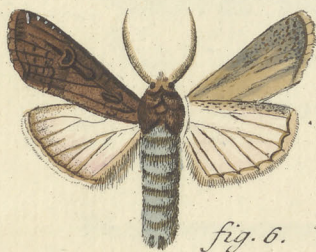


fig. 7.

Phalaenar: europ:

Bomb. el. dors. crist. Lin. Sp. 64. *Palpina*. fig. 1. mas. fig. 2. foem.
fig. 3. larva. fig. 4. Chrysalis. fig. 5. *Clavis*. fig. 6. *Spinula*. mas.
fig. 7. Variet. eiusd. Specei.

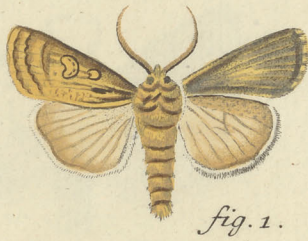


fig. 1.

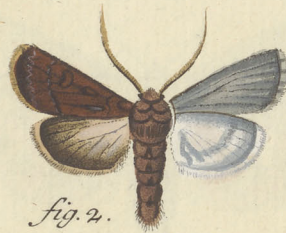


fig. 2.



fig. 3.



fig. 4.



fig. 5.

Phalaen: europ:

Bomb. fig. 1. *Exclamationis* Lin. Sp. Noct. 155. mas. fig. 2. variet.
 fig. 3. *caliginosa*. fig. 4. *fuscosa*. fig. 5. *melaleuca*.



fig. 1.

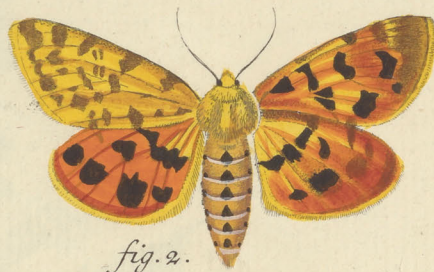


fig. 2.



fig. 3.



fig. 4.



fig. 5.



fig. 6.

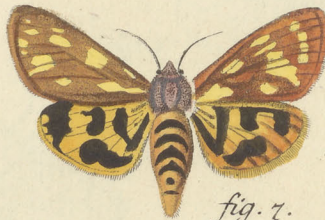


fig. 7.

Phalaen: europ:

Bomb. el. al. depr. dorso. crist. Lin. Sp. 67. ^{Purpurea} Purpurea. fig. 1. mas. fig. 2. foem. fig. 3. larva. fig. 4. chrysalis. fig. 5. folliculus. fig. 6. Bomb. Spiril. dorf. laevi. al. defl. ^{Aulica} Aulica mas. fig. 7. foemina.

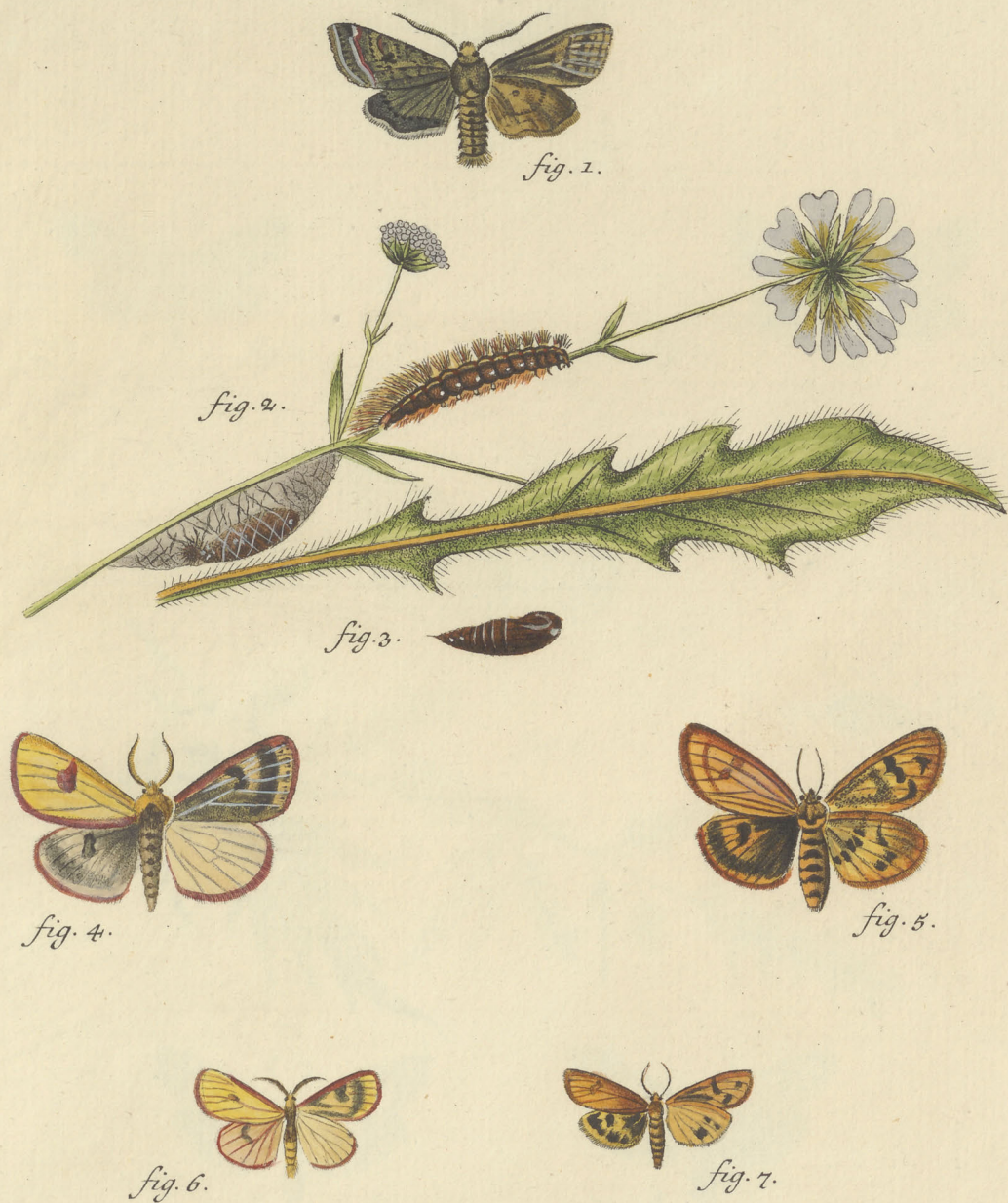
Geophanus

L. C. Pock sc.



Phalaen. europ.

Bomb. Spiril. dorf. laevi, al. defl. Lin. Sp. 69. Lubricipeda. fig. 1. larva. primae. aetatis, fig. 2. adulta. fig. 3. follic. fig. 4. chryf. fig. 5. imago maris. Fig. 6. mas. fig. 7. var. foem. Menthastr. fig. 8. larva. fig. 9. follic. fig. 10. chryf.



Phalaen: europ:

Bomb. Spiril. dorso. laevi. Lin. Sp. 70. Lota. fig. 1. mas. — Lin. Sp. 71.
Russula. fig. 2. larva. fig. 3. chrysal. fig. 4. imago maris, fig. 5. foeminae.
(Ruffina Lin.) fig. 6. Varietas minor maris. fig. 7. foemina.

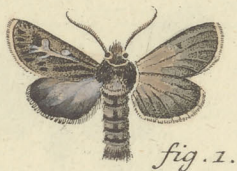


fig. 1.



fig. 2.



fig. 3.

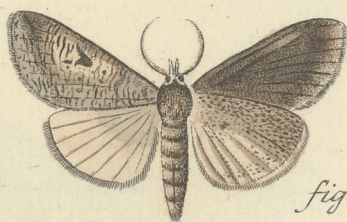


fig. 4.



fig. 5.



fig. 6.



fig. 7.



fig. 8.

Phalaen: europ:

Bomb. Spirul, dors. laevi, al. defl. Lin. Sp. 73. *Graminis*. fig. 2. *Tricuspis*.
mas. fig. 3. *foem.* fig. 4. *Iusoria*. Sp. Lin. 74. fig. 5. larva. fig. 6. *Chrysf.*
 fig. 7. *mas.* fig. 8. *foem.* *Grammica*. Lin. Sp. 75.



fig. 1.



fig. 2.

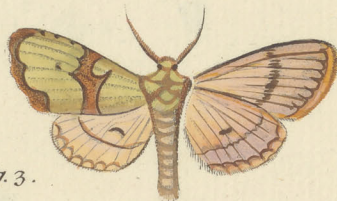


fig. 3.

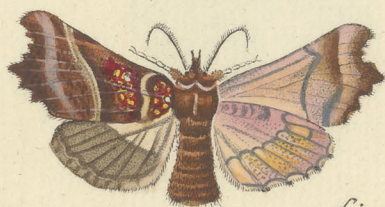


fig. 4.



fig. 5.

fig. 6.



fig. 7.

Phalaen: europ:

Bomb. Spiriling. dors. laevi. al. defl. Lin. Sp. 76. Cribrium. Lin. Sp. 77. Spiril. dors. crist. Celsia. fig. 2. 3. Lin. Sp. 78. Libatrix. fig. 4. mas. fig. 5. 6. larvae. fig. 7. chrysal.

I.C. Bock sc.

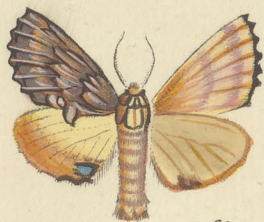


fig. 1.

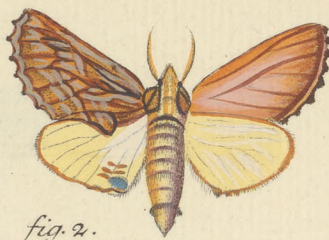


fig. 2.

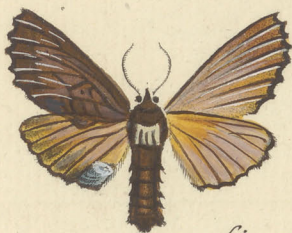


fig. 3.



fig. 4.



fig. 5.

Phalaen: europ:

Bomb. Spiril. dorso crist. Mis. defl. Lin. Sp. 80. Camelinna. fig. 1. mas.
fig. 2. foem. fig. 4. larva, fig. 5. chryf. fig. 3. Varietas. (Capucina.
Lin. Sp. 79.)

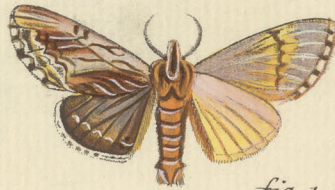


fig. 1.

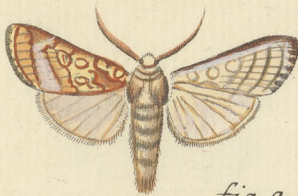


fig. 2.



fig. 3.



fig. 4.



fig. 5.

Phalaenar. europ.

Bomb. Spiril. dorso crist. al. defl. fig. 1. Luculla. Lin. Sp. 81. Oo. fig. 2.
mas. fig. 3. foem. fig. 4. larva. fig. 5. chryf.

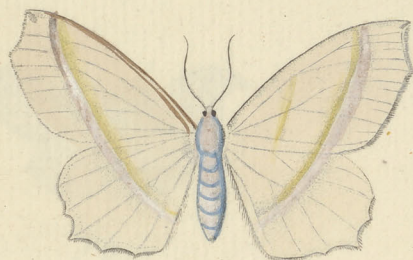


fig. 1.



fig. 2.

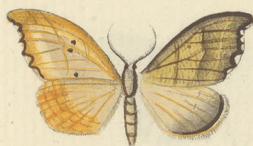


fig. 3.



fig. 4.



fig. 5.



fig. 6.

Phalaen. europ.

Bomb. falcatae. fig. 1. foem. fig. 2. *maris Variet. Sesquistriataria*. fig. 3. *mas.* fig. 4. foem. fig. 5. larva. fig. 6. chryf. *Lacertula*. Lin. Sp. 204. Geom.



fig. 1.

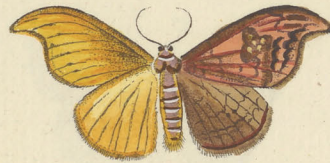


fig. 2.



fig. 3.



fig. 4.



fig. 5.



fig. 6.

Phalaenar. europ.

Bomb. al. falc. fig. 1. mas. fig. 2. foem. Harpagula. fig. 3. mas. fig. 4.
foem. fig. 5. larva. fig. 6. chryf. Falcula.

I. C. Beck sc.



fig. 1.

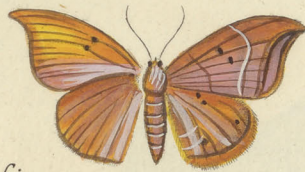


fig. 2.



fig. 3.



fig. 4.



fig. 5.



fig. 6.



fig. 7.

Phalaenar. europ.

Bomb. al. falc. fig. 1. mas. fig. 2. foem. fig. 3. Larva. Hamula. fig. 4. mas. fig. 5. foem. fig. 6. Larva. fig. 7. Chrysf. Sicula.



fig. 1.



fig. 2.



fig. 3.



fig. 4.



fig. 5.



fig. 6.

Phalaen. europ.

Bomb. Spirul. dorso crist. fig. 1. Decolora. fig. 2. B. Spir. d. laevi. Opaca. fig. 3. Rubricosa. fig. 4. Variet. fig. 5. Fuscago. fig. 6. Trigonalis.



fig. 1.



fig. 2.



fig. 4.



fig. 3.



fig. 5.

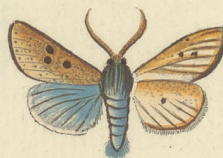


fig. 6.

Phalaen. europ.

Bomb. Spiril. dorso, crist. fig. 1. mas. fig. 2. foem. Gothica. Lin. Sp. 159.
(Noct.) fig. 3. Variet. singularis. — Fig. 4. Vau punctatum. — Fig. 5. mas.
fig. 6. foem. pulverulenta.



fig. 1.



fig. 2.

fig. 3.

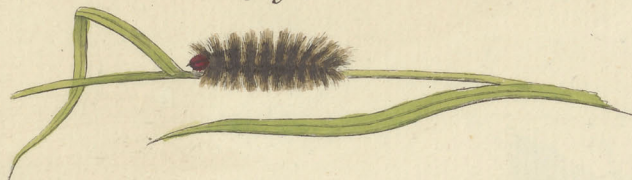


fig. 4.



fig. 5.



fig. 6.



fig. 7.

fig. 8.

fig. 9.

Phalaen. europ.

Bomb. fig. 1. foem. fig. 2. mas. fig. 3. larva. Rosea. fig. 4. mas. fig. 5. foem. fig. 6. Var. fig. 7. larva. fig. 8. folliculus. fig. 9. chryf. Cucullatella.

Lythrum

I. C. Bock sc.

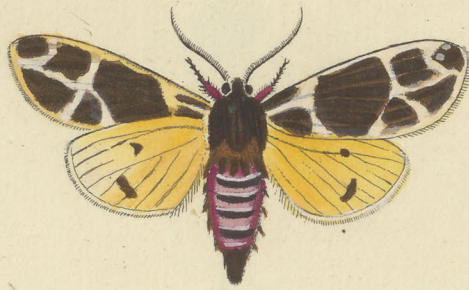


fig. 1.



fig. 2.



fig. 3.



fig. 4.

Phalaen. europ.

Bomb. fig. 1. Flavia. fig. 2. Albida. fig. 3. Ramosa.

fig. 4. Larva Phal. Ermineae.



fig. 1.



fig. A.



fig. 2.



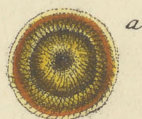
fig. 3.



fig. 4.



fig. 5.



a

fig. 6.



b

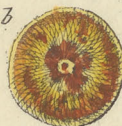


fig. 9.



fig. 7.



fig. 8.

fig. 10.



a

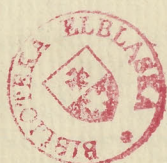


b



Phalaen. europ.

Bombycum Ovula. fig. 1. *Bucephalae*. (Tab. XXII.) fig. 2. *A. Cimicis bidentis*. fig. 2. *Salicis*. (Tab. XLI.) fig. 3. *Quercifoliae*. (Tab. VI.) fig. 4. *Lubricipeda*. (Tab. LXVI.) fig. 5. *Vinulae*. (Tab. XVIII.) fig. 6. *Ermineae*. a. *Superne* b. *inferne*. (Tab. XIX.) fig. 7. *Pini*. (Tab. XII.) fig. 8. *Cossi*. (Tab. LXI.) fig. 9. *Coryli*. (Tab. L.) fig. 10. *Mori*. a. *Sup.* b. *inf.* (Tab. XXIV.)



280962



