



fig. 1.



fig. 2.



fig. 3.

fig. 4.

fig. 5.



fig. 6.

Phalaenar. europ.

Bomb. et. al. dep. dorf. laev. Linn. Sp. 44. *Dispar.* fig. 1. mas. fig. 2. fem. fig. 3. 4.
larva. fig. 5. chrysal. fig. 6. maris. aberratio singularis.

I. C. Bock sc.



fig. 1.

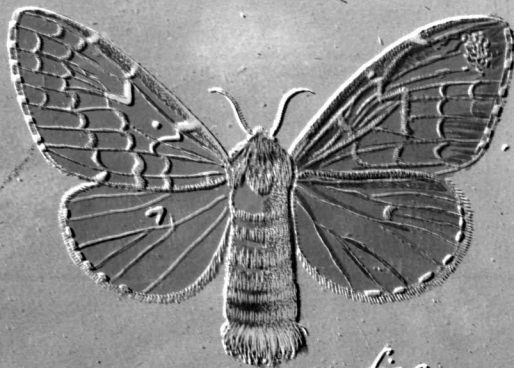


fig. 2.

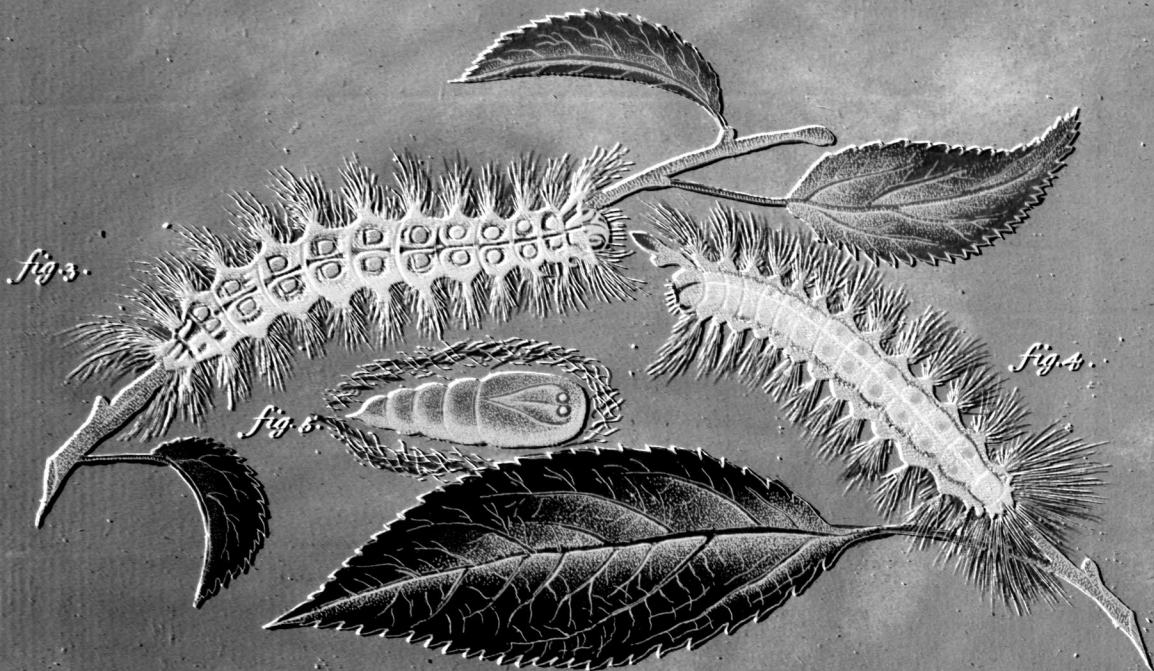


fig. 3.

fig. 5.

fig. 4.



fig. 6.

Phalaenar. europ.

Bomb. d. al. dep. dors. laev. Trin. Sp. 44. Dispar. fig. 1. mas. fig. 2. fem. fig. 3. 4. larva. fig. 5. drysal. fig. 6. maris. aberratio singularis.

I. C. Boeck sc.

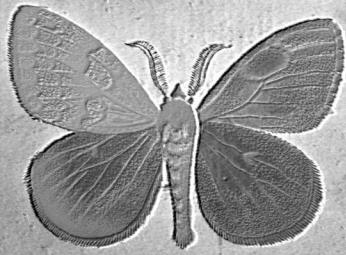


fig. 1.

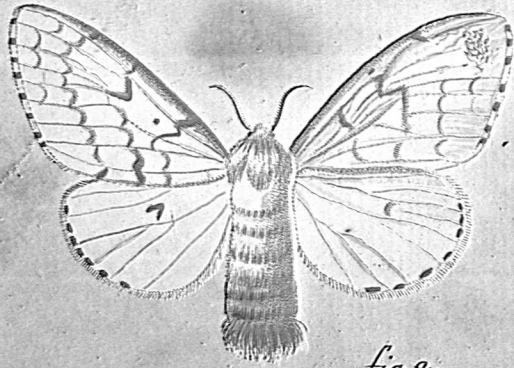


fig. 2.

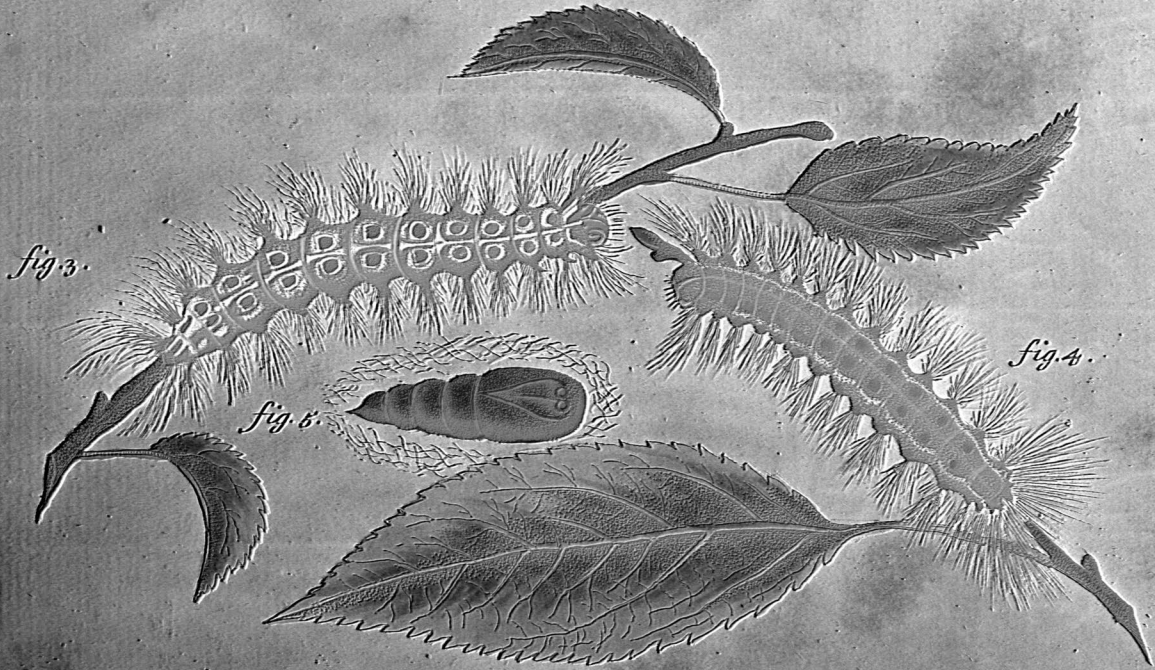


fig. 3.

fig. 5.

fig. 4.

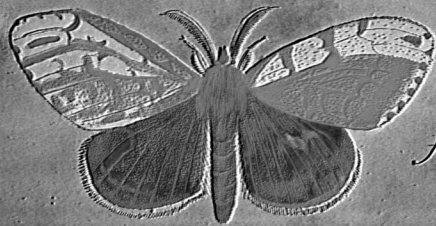


fig. 6.

Phalaenar. europ.

Bomb. el. al. dep. dors. laev. Itin. Sp. 44. Dispar. fig. 1. mas. fig. 2. foem. fig. 3. 4.
larva. fig. 5. chrysal. fig. 6. maris. aberratio singularis.

I. C. Bock sc.

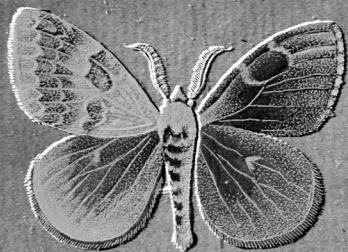


fig. 1.

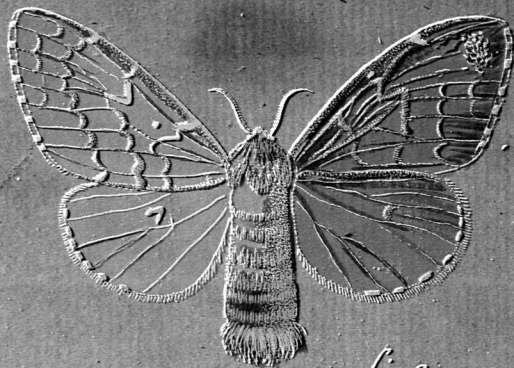


fig. 2.

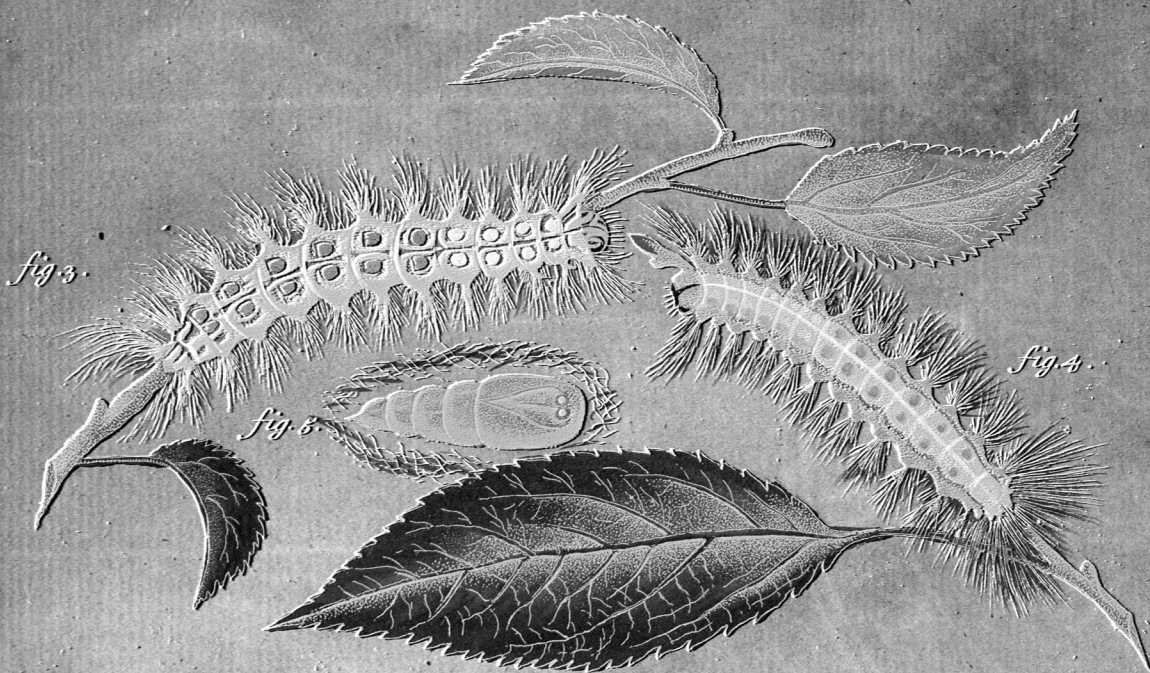


fig. 3.

fig. 5.

fig. 4.

fig. 6.

Phalaenar. europ.

Bomb. et. al. dep. dors. laev. Trin. Sp. 44. ^{Dispar.} fig. 1. mas. fig. 2. foem. fig. 3. 4.
larva. fig. 5. chrysal. fig. 6. maris. aberratio singularis.

T. C. Boeck sc.



fig. 1.



fig. 2.

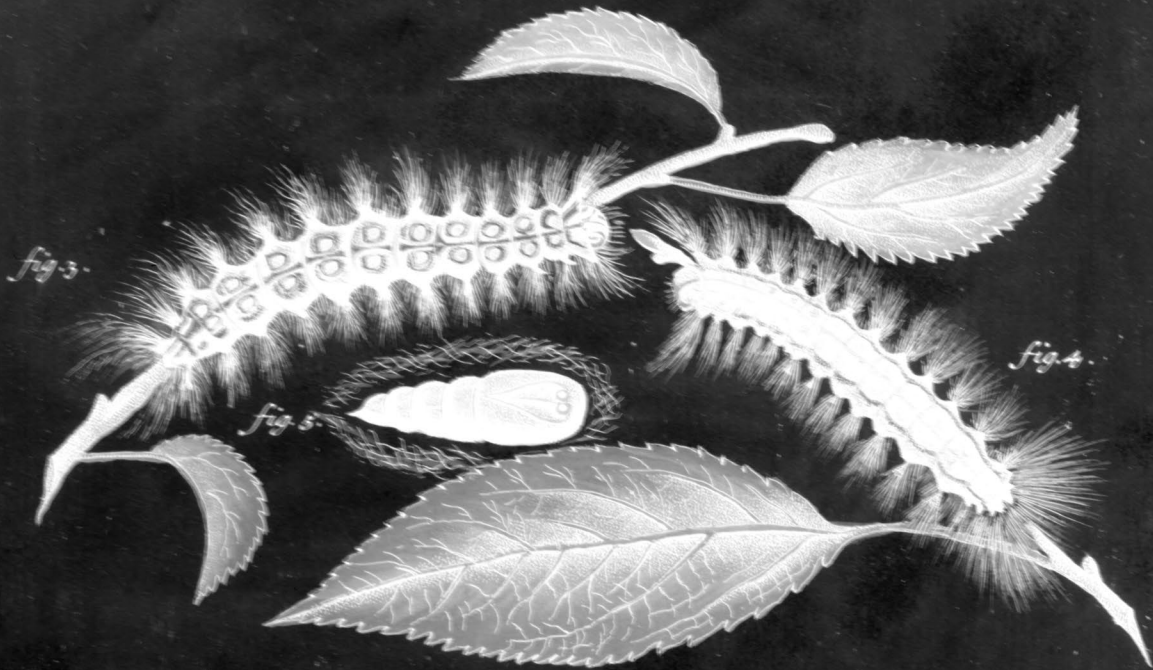


fig. 3.

fig. 4.

fig. 5.



fig. 6.

Phalaenar. europ.

Bomb. et. al. dep. dorf. laev. Irin. Sp. 44. *Dispar.* fig. 1. mas. fig. 2. fem. fig. 3. 4. larva. fig. 5. chrysal. fig. 6. maris. aberratio singularis.

I. C. Bock sc.



fig. 1.



fig. 2.

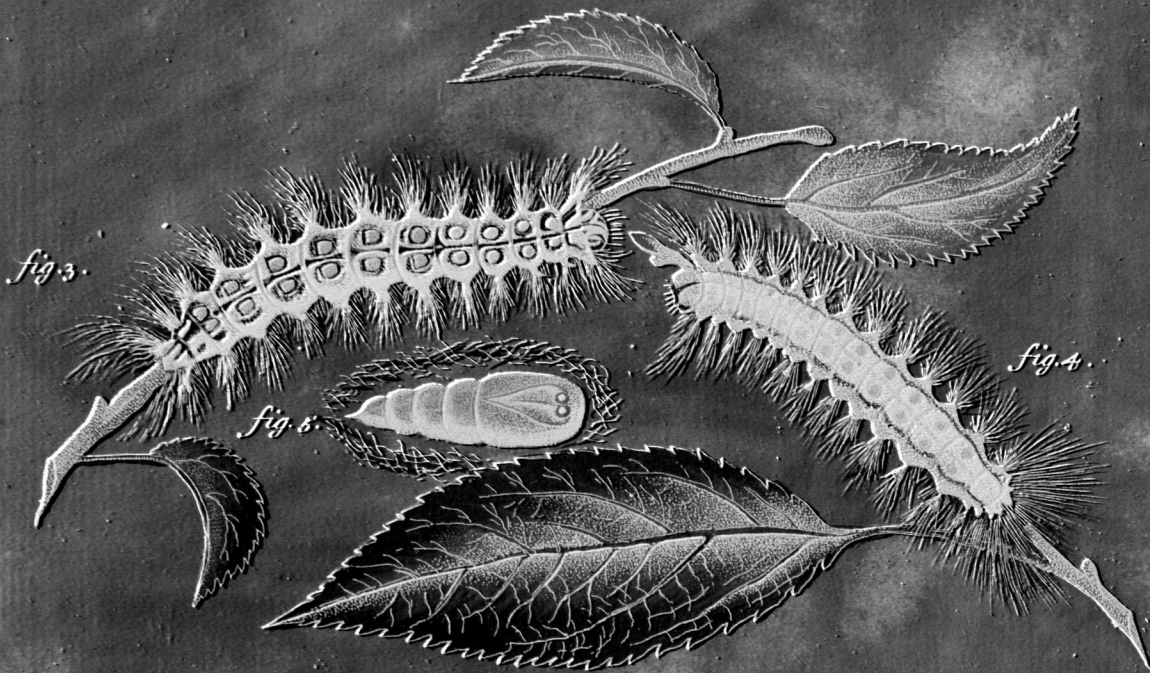


fig. 3.

fig. 5.

fig. 4.

fig. 6.

Phalaenar. europ.

Bomb. d. al. dep. dors. laev. Itin. Sp. 44. *Dispar.* fig. 1. mas. fig. 2. foem. fig. 3. 4.
larva. fig. 5. chrysal. fig. 6. maris. aberratio singularis.

I. C. Bock sc.

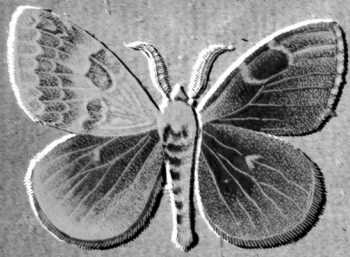


fig. 1.

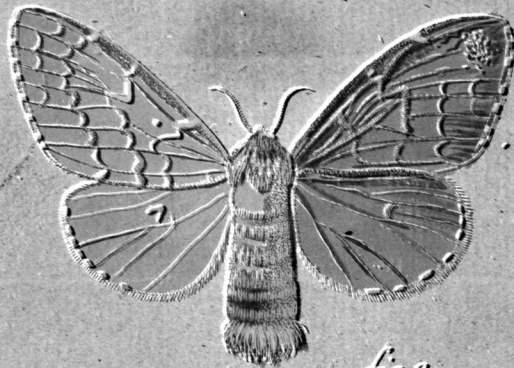
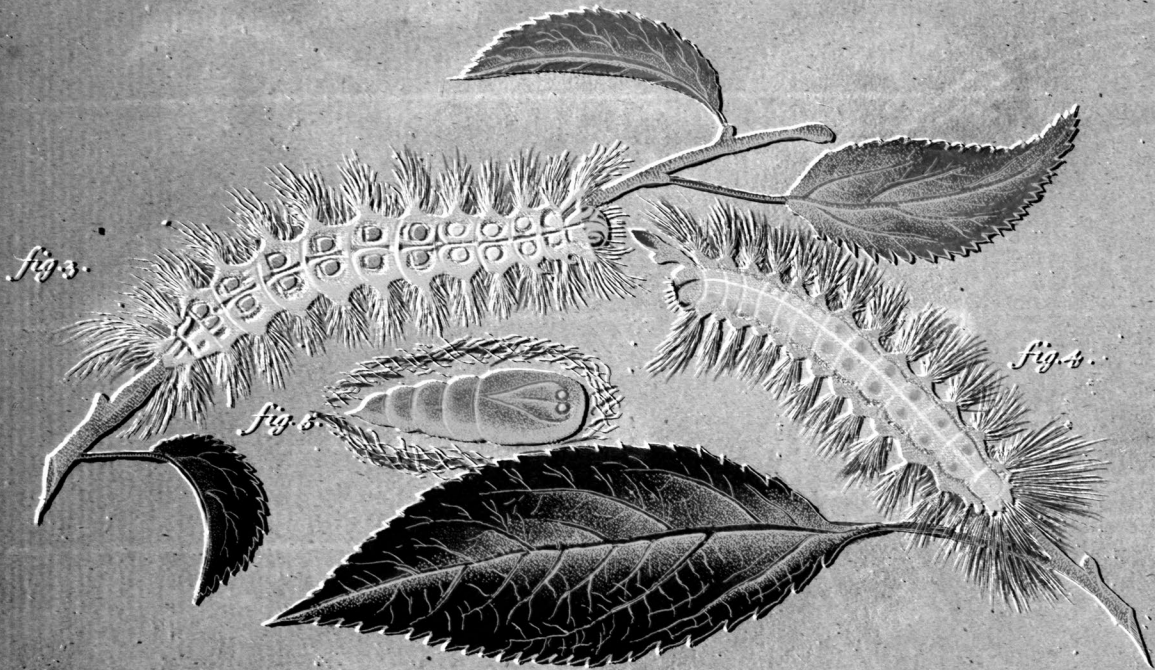


fig. 2.



figs.

fig. 3.

fig. 4.



fig. 6.

Phalaenar. europ.

Bomb. d. al. dep. dof. laev. Trin. Sp. 44. Dispar. fig. 1. mas. fig. 2. fem. fig. 3. 4.
larva. fig. 5. chrysal. fig. 6. maris. aberratio singularis.

I. C. Boeck sc.

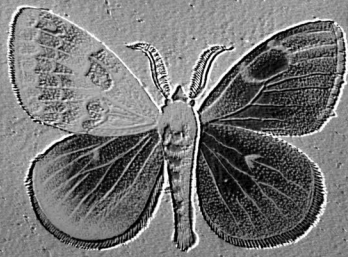


fig. 1.



fig. 2.

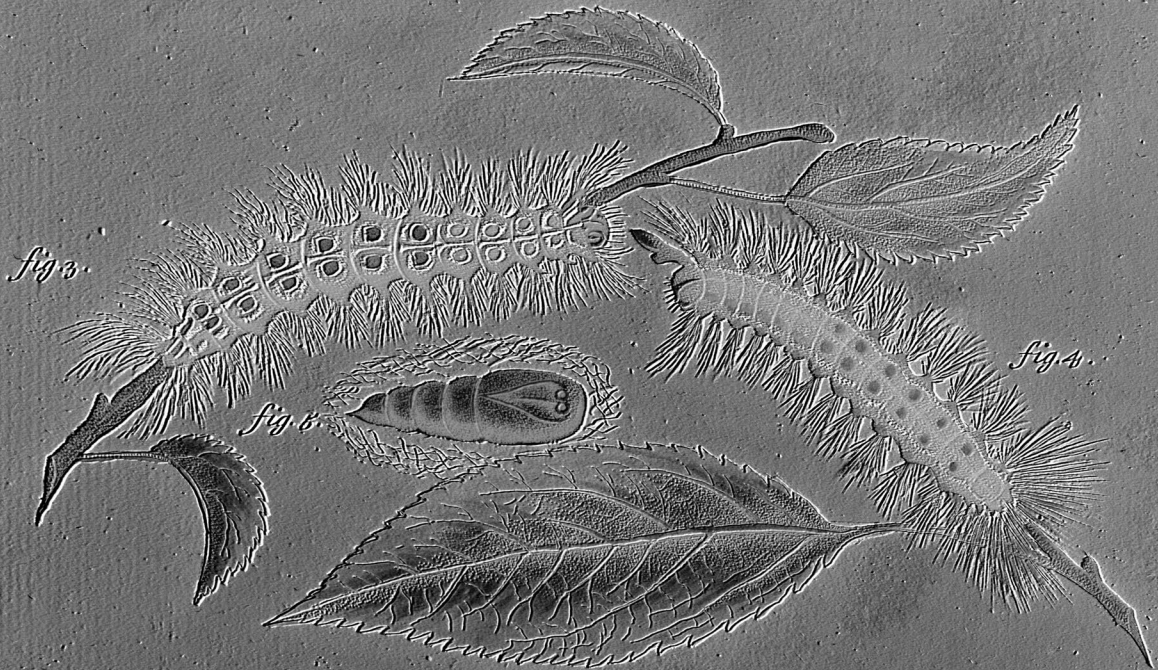


fig. 3.

fig. 5.

fig. 4.



fig. 6.

Phalaenar. europ.

Bomb. el. al. dep. dors. laev. litin. Sp. 44. Dispar. fig. 1. mas. fig. 2. foem. fig. 3. 4. larva. fig. 5. chrysal. fig. 6. mavis. aberratio singularis.

I. C. Boeck sc.



fig. 1.

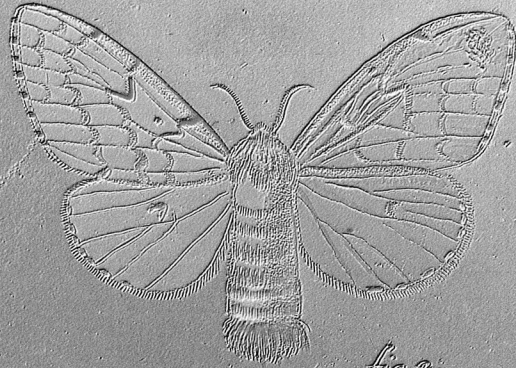


fig. 2.



fig. 3.

fig. 5.

fig. 4.



fig. 6.

Phalaenar. europ.

Bomb. el. al. dep. dors. laev. Itin. Sp. 44. Dispar. fig. 1. mas. fig. 2. foem. fig. 3. 4. larva. fig. 5. drysal. fig. 6. variis aberratio singularis.

J. C. Boeck sc.



fig. 1.



fig. 2.



fig. 3.

fig. 5.

fig. 4.



fig. 6.

Phalaenar. europ.

Bomb. el. al. dep. dor. laev. Lin. Sp. 44. Dispar. fig. 1. mas. fig. 2. foem. fig. 3. 4. larva. fig. 5. chrysal. fig. 6. maris. aberratio singularis.

I. C. Bock sc.



fig. 1.



fig. 2.



fig. 3.

fig. 5.

fig. 4.



fig. 6.

Phalaenar. europ.

Bomb. el. al. dep. dorf. laev. Lin. Sp. 44. *Dispar.* fig. 1. mas. fig. 2. foem. fig. 3. 4. larva. fig. 5. chrysal. fig. 6. maris. aberratio singularis.

I. C. Bock sc.



fig. 1.



fig. 2.



fig. 3.

fig. 5.

fig. 4.



fig. 6.

Phalaenar. europ.

Bomb. el. al. dep. dorf. laev. Lin. Sp. 44. ^{Dispar.} fig. 1. mas. fig. 2. foem. fig. 3. 4. larva. fig. 5. chrysal. fig. 6. maris. aberratio singularis.

I. C. Bock sc.



fig. 1.



fig. 2.

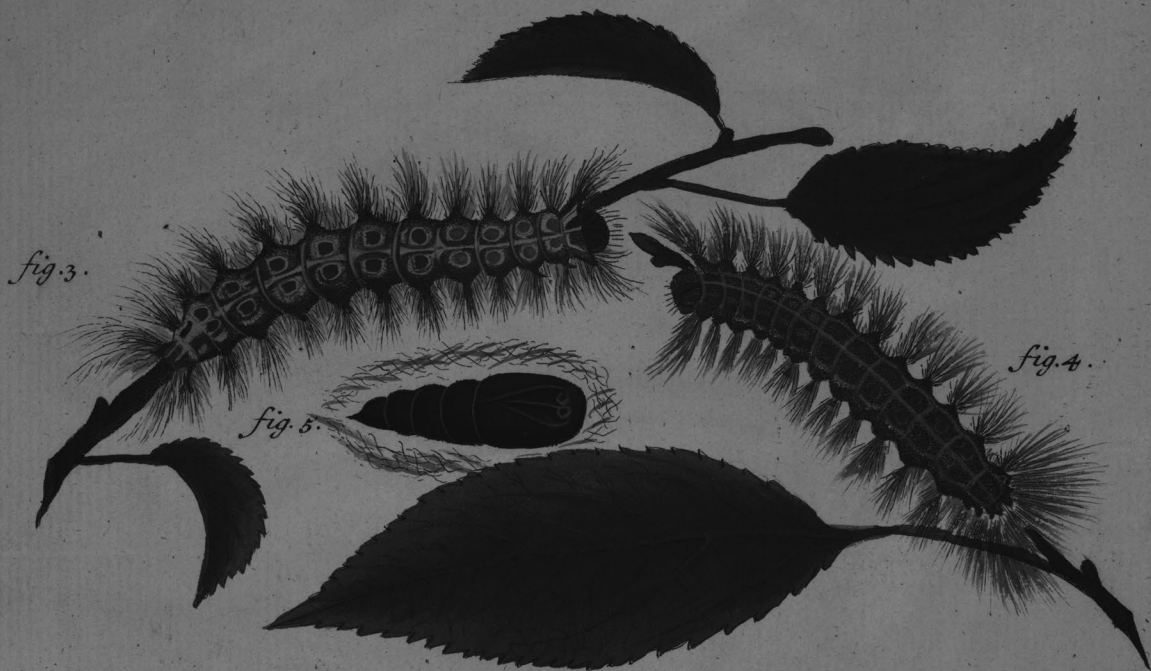


fig. 3.

fig. 5.

fig. 4.



fig. 6.

Phalaenar. europ.

Bomb. el. al. dep. dor. laev. Lin. Sp. 44. Dispar. fig. 1. mas. fig. 2. foem. fig. 3. 4. larva. fig. 5. chrysal. fig. 6. maris. aberratio singularis.

I. C. Bock sc.



fig. 1.



fig. 2.



fig. 3.

fig. 5.

fig. 4.



fig. 6.

Phalaenar. europ.

Bomb. el. al. dep. dorf. laev. Lin. Sp. 44. ^{Dispar.} fig. 1. mas. fig. 2. foem. fig. 3. 4.
larva. fig. 5. chrysal. fig. 6. maris. aberratio singularis.

I. C. Bock sc.



fig. 1.



fig. 2.



fig. 3.

fig. 5.

fig. 4.



fig. 6.

Phalaenar. europ.

Bomb. et. al. dep. dorf. laev. Lin. Sp. 44. *Dispar.* fig. 1. mas. fig. 2. foem. fig. 3. 4. larva. fig. 5. chrysal. fig. 6. maris. aberratio singularis.

I. C. Bock sc.



fig. 1.



fig. 2.

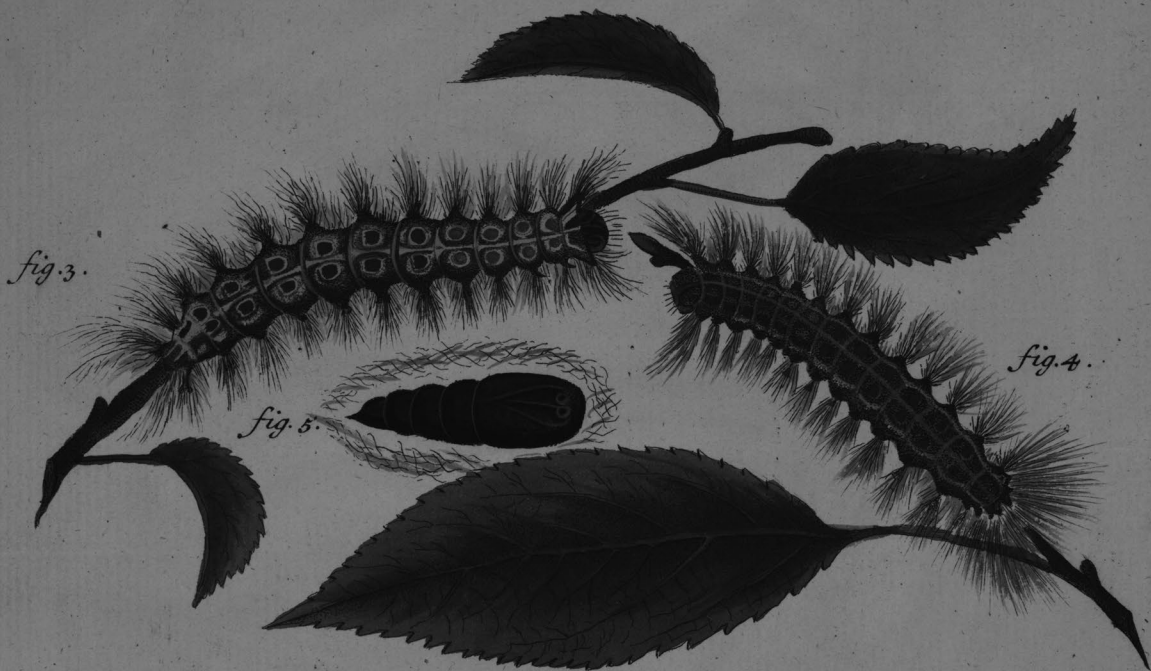


fig. 3.

fig. 5.

fig. 4.



fig. 6.

Phalaenar. europ.

Bomb. el. al. dep. dor. laev. Lin. Sp. 44. Dispar. fig. 1. mas. fig. 2. foem. fig. 3. 4. larva. fig. 5. chrysal. fig. 6. maris. aberratio singularis.

I. C. Bock sc.



fig. 1.



fig. 2.

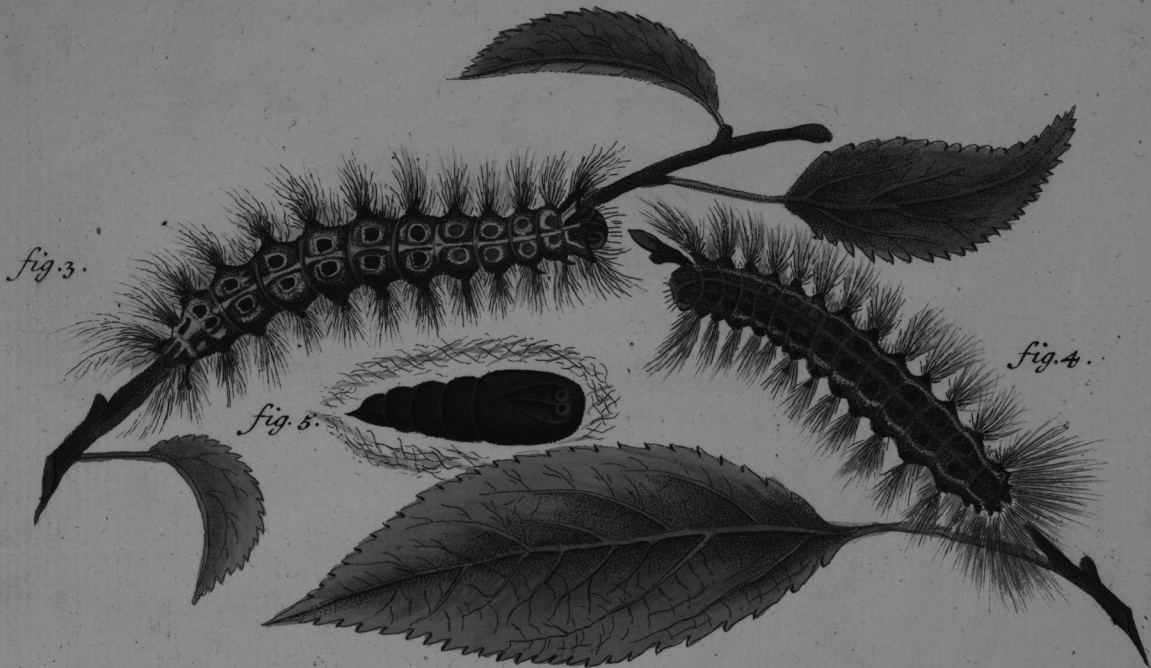


fig. 3.

fig. 5.

fig. 4.



fig. 6.

Phalaenar. europ.

Bomb. el. al. dep. dorf. laev. Litn. Sp. 44. *Dispar.* fig. 1. mas. fig. 2. foem. fig. 3. 4.
larva. fig. 5. chrysal. fig. 6. maris. aberratio singularis.

I. C. Bock sc.



fig. 1.



fig. 2.



fig. 3.

fig. 4.

fig. 5.



fig. 6.

Phalaenar. europ.

Bomb. et. al. dep. dors. laev. Litn. Sp. 44. ^{Dispar.} fig. 1. mas. fig. 2. foem. fig. 3. 4. larva. fig. 5. chrysal. fig. 6. maris. aberratio singularis.

I. C. Bock sc.



fig. 1.



fig. 2.



fig. 3.

fig. 4.

fig. 5.



fig. 6.

Phalaenar. europ.

Bomb. el. al. dep. dors. laev. Lin. Sp. 44. *Dispar.* fig. 1. mas. fig. 2. foem. fig. 3. 4. larva. fig. 5. chrysal. fig. 6. maris. aberratio singularis.

I. C. Bock sc.



fig. 1.



fig. 2.



fig. 3.

fig. 4.

fig. 5.



fig. 6.

Phalaenar. europ.

Bomb. el. al. dep. dors. laev. Lin. Sp. 44. *Dispar.* fig. 1. mas. fig. 2. foem. fig. 3. 4.
larva. fig. 5. chrysal. fig. 6. maris. aberratio singularis.

I. C. Bock sc.



fig. 1.



fig. 2.



fig. 3.

fig. 4.

fig. 5.



fig. 6.

Phalaenar. europ.

Bomb. el. al. dep. dors. laev. Lin. Sp. 44. *Dispar.* fig. 1. mas. fig. 2. foem. fig. 3. 4. larva. fig. 5. chrysal. fig. 6. maris. aberratio singularis.

I. C. Bock sc.



fig. 1.



fig. 2.

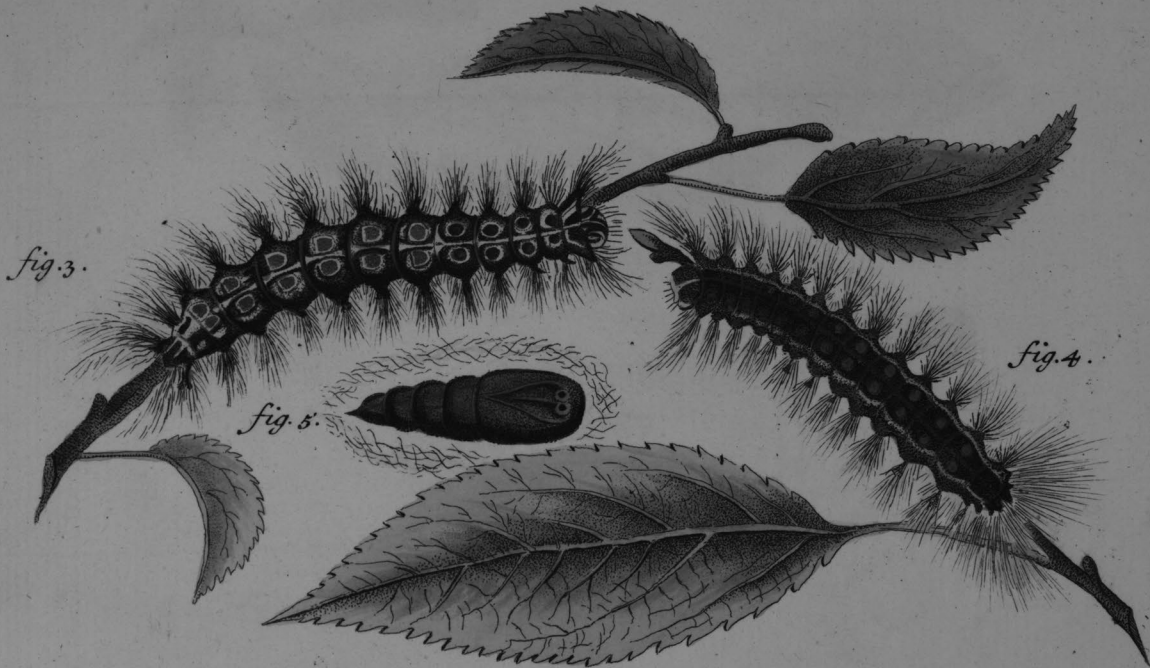


fig. 3.

fig. 4.

fig. 5.



fig. 6.

Phalaenar. europ.

Bomb. et. al. dep. dors. laev. Lin. Sp. 44. *Dispar.* fig. 1. mas. fig. 2. foem. fig. 3. 4. larva. fig. 5. chrysal. fig. 6. maris. aberratio singularis.

I. C. Bock sc.



fig. 1.



fig. 2.

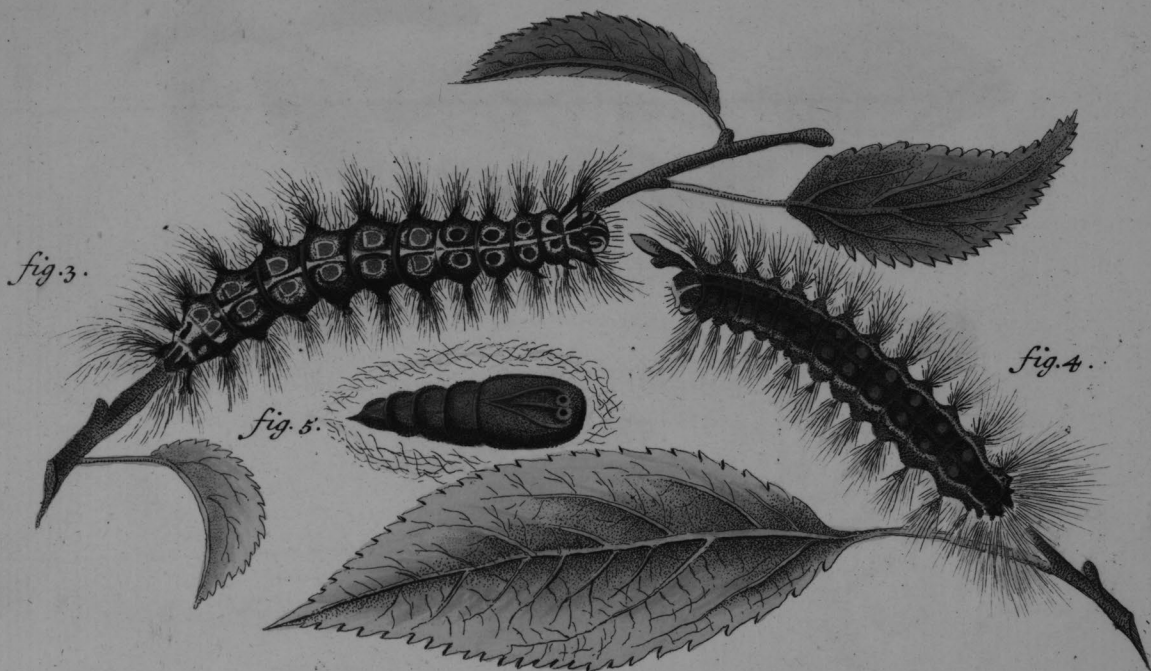


fig. 3.

fig. 4.

fig. 5.



fig. 6.

Phalaenar. europ.

Bomb. el. al. dep. dors. laev. Lin. Sp. 44. *Dispar.* fig. 1. mas. fig. 2. foem. fig. 3. 4. larva. fig. 5. chrysal. fig. 6. maris. aberratio singularis.

I. C. Bock sc.



fig. 1.

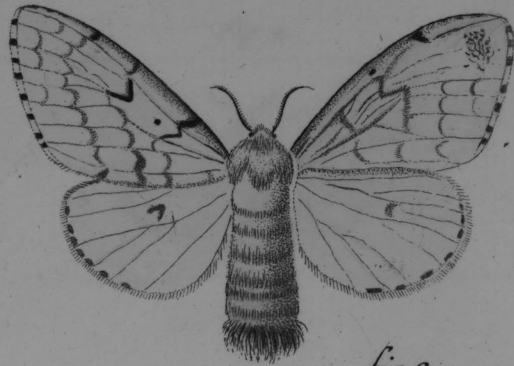


fig. 2.

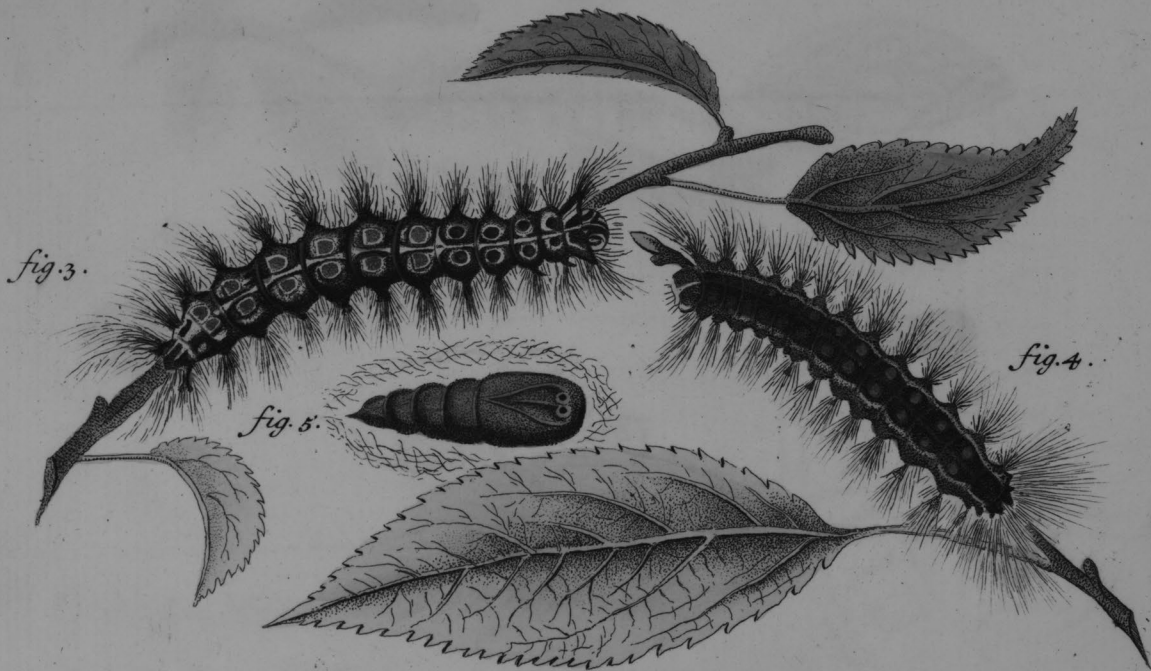


fig. 3.

fig. 4.

fig. 5.



fig. 6.

Phalaenar. europ.

Bomb. el. al. dep. dors. laev. Lin. Sp. 44. *Dispar.* fig. 1. mas. fig. 2. foem. fig. 3. 4. larva. fig. 5. chrysal. fig. 6. maris aberratio singularis.

I. C. Bock sc.



fig. 1.



fig. 2.

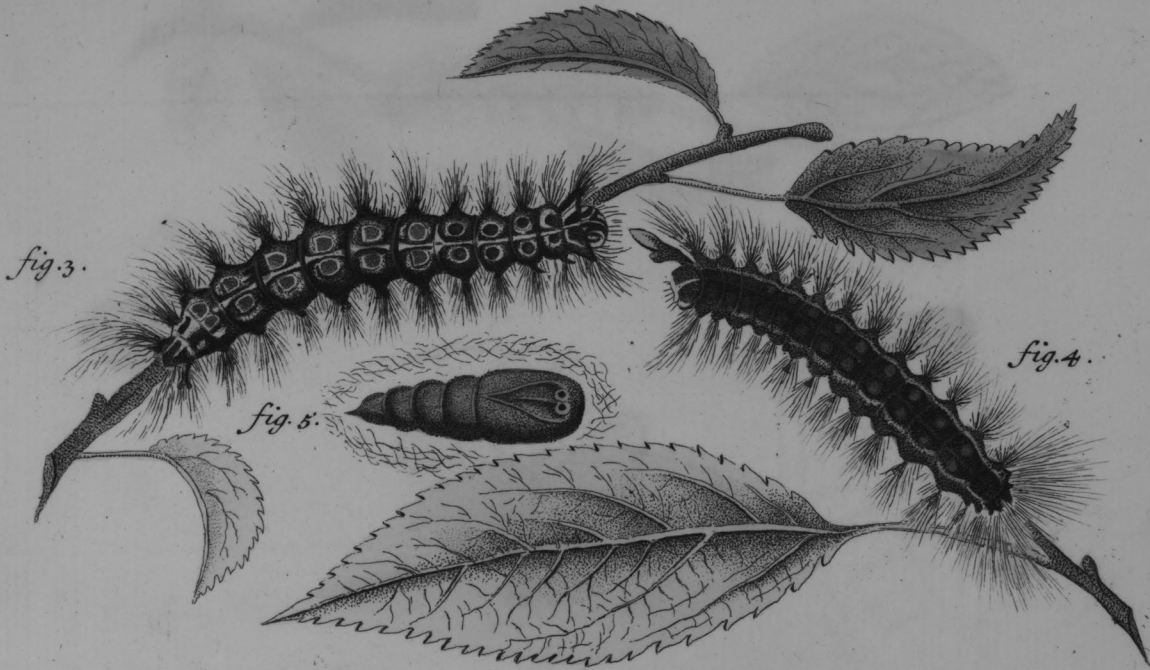


fig. 3.

fig. 4.

fig. 5.



fig. 6.

Phalaenar. europ.

Bomb. el. al. dep. dors. laev. Lin. Sp. 44. *Dispar.* fig. 1. mas. fig. 2. foem. fig. 3. 4. larva. fig. 5. chrysal. fig. 6. maris. aberratio singularis.

I. C. Bock sc.



fig. 1.

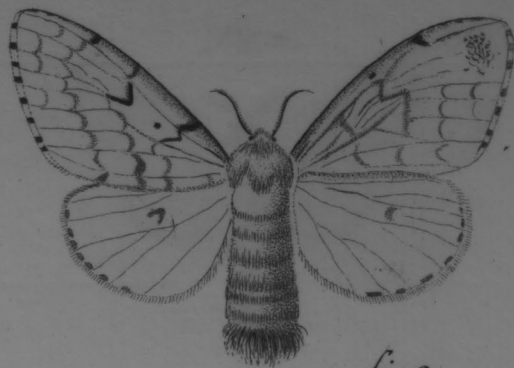


fig. 2.

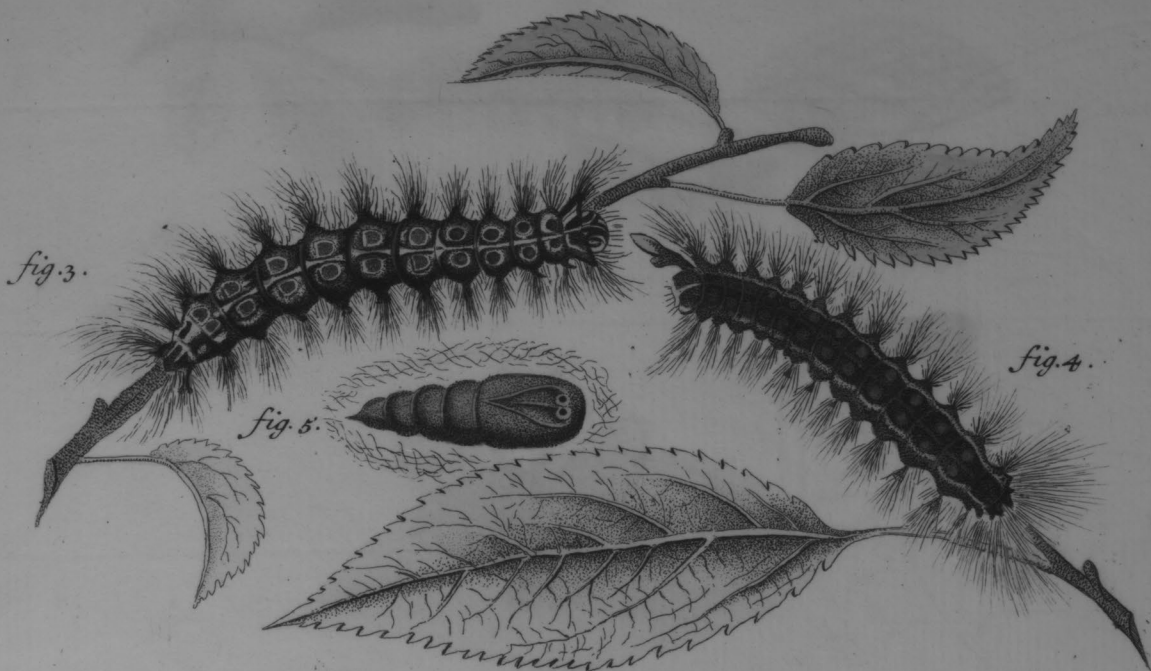


fig. 3.

fig. 4.

fig. 5.



fig. 6.

Phalaenar. europ.

Bomb. el. al. dep. dors. laev. Lin. Sp. 44. *Dispar.* fig. 1. mas. fig. 2. foem. fig. 3. 4. larva. fig. 5. chrysal. fig. 6. maris aberratio singularis.

I. C. Bock sc.