

fig. 1.



fig. 2.



fig. 3.



fig. 4.



fig. 5.

Phalaen. europ.

Noctuae Spiril. fig. 1. mas. fig. 2. foem. fig. 3. 4. larvae. fig. 5. chrysal.

Matronula. Lin. Sp. 92.

Phalaena europaea

I. C. Boeck. sc.

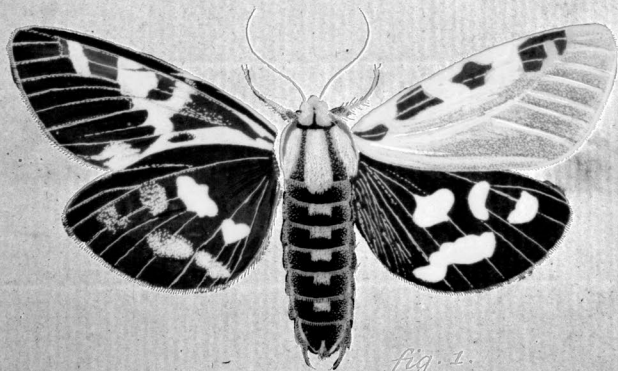


fig. 1.

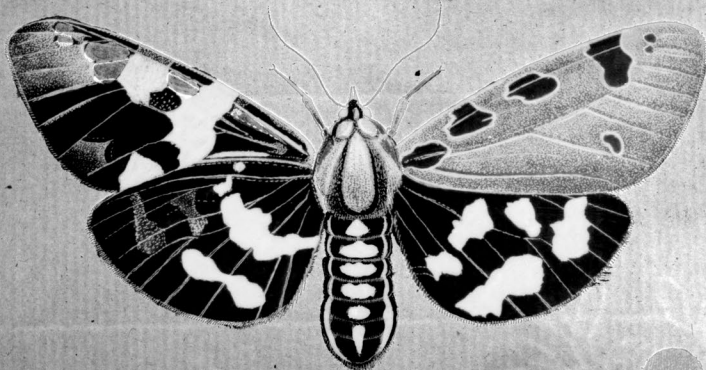


fig. 2.

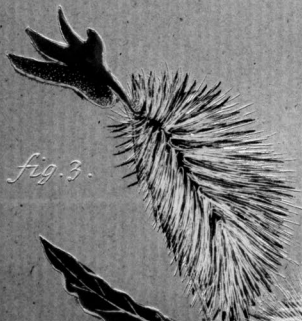


fig. 3.

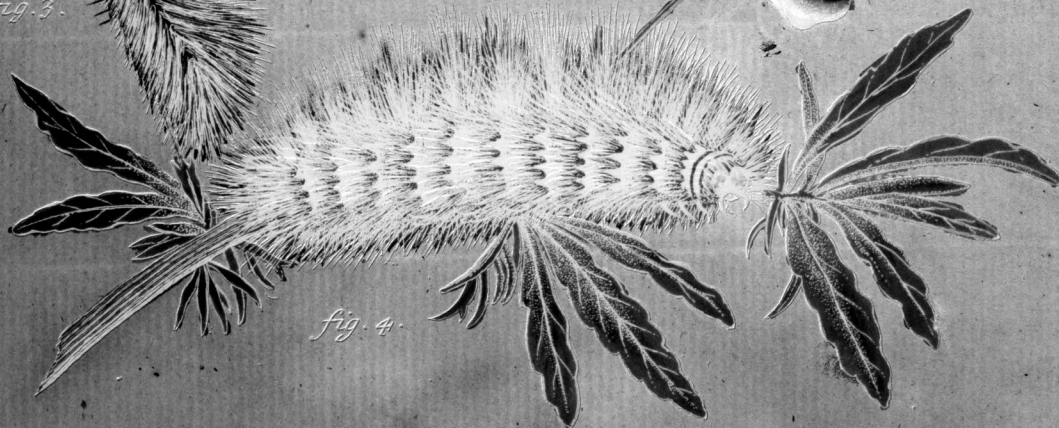


fig. 4.



fig. 5.

Phalaen. europ.

Noctuae Spiril. fig. 1. mas. fig. 2. fem. fig. 3. 4. larvae. fig. 5. chrysal.

Matronula. Linn. Sp. 92.

I. C. Bock sc.

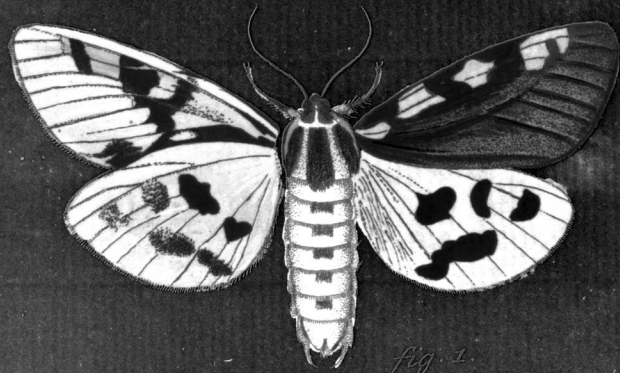


fig. 1.

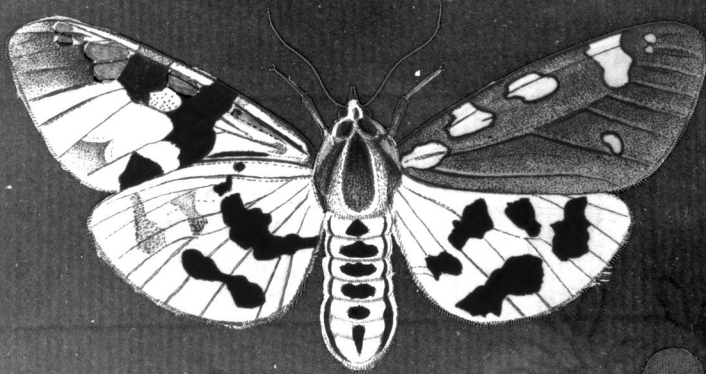


fig. 2.

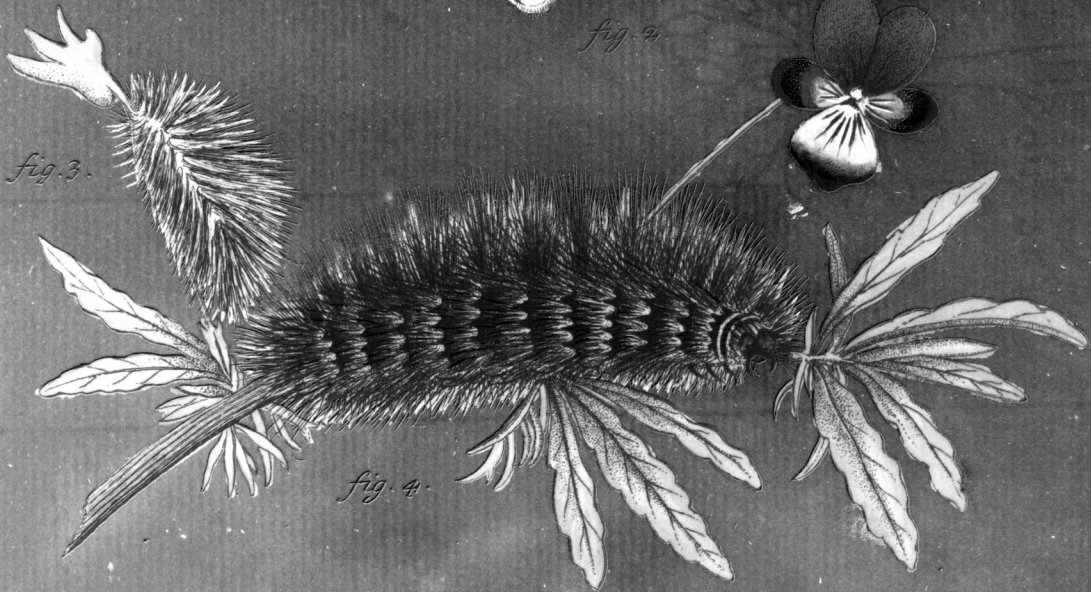


fig. 3.

fig. 4.

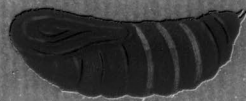


fig. 5.

Phalaen. europ.

Noctuae Spiril. fig. 1. mas. fig. 2. fem. fig. 3. 4. larvae. fig. 5. chrysal.

Matronula. Linn. Sp. 92.

I. C. Bock sc.

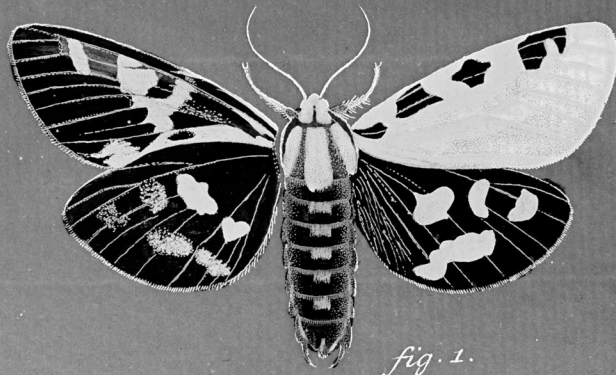


fig. 1.



fig. 2.

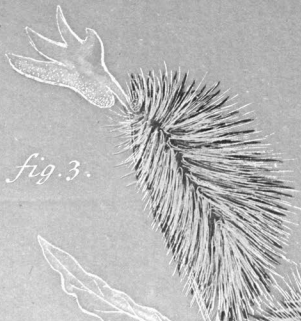


fig. 3.

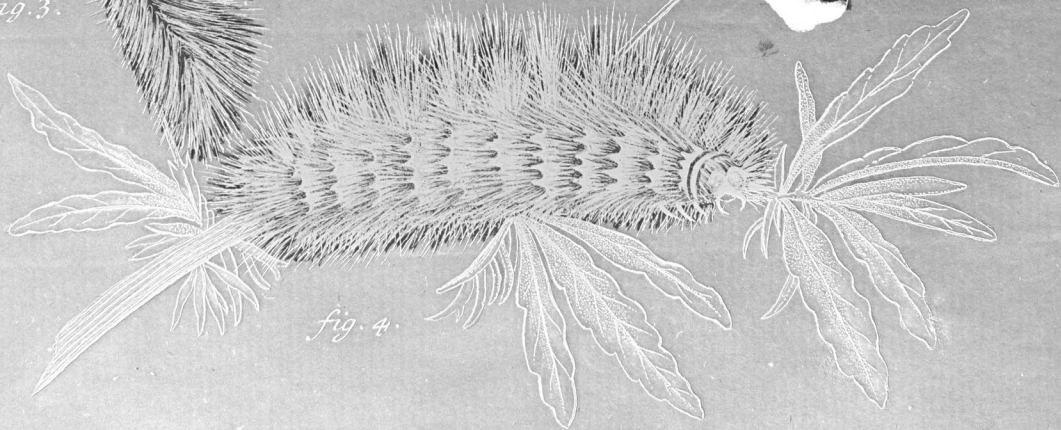


fig. 4.

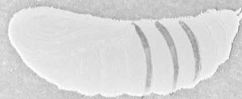


fig. 5.

Phalaen. europ.

Noctuae Spiril. fig. 1. mas. fig. 2. foem. fig. 3. 4. larvae. fig. 5. chrysal.

Matronula. Triv. Sp. 92.

I. C. Bock sc.

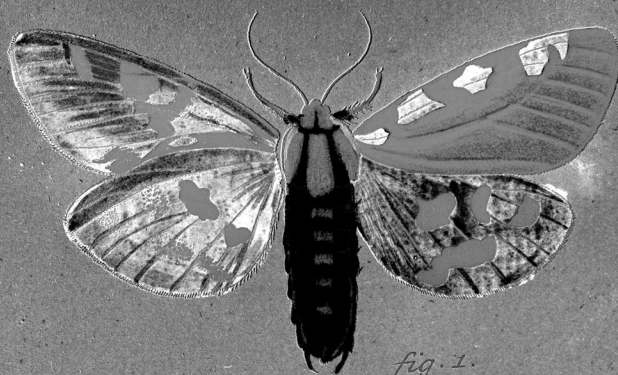


fig. 1.



fig. 2.

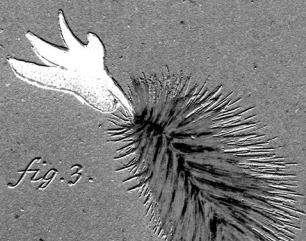


fig. 3.

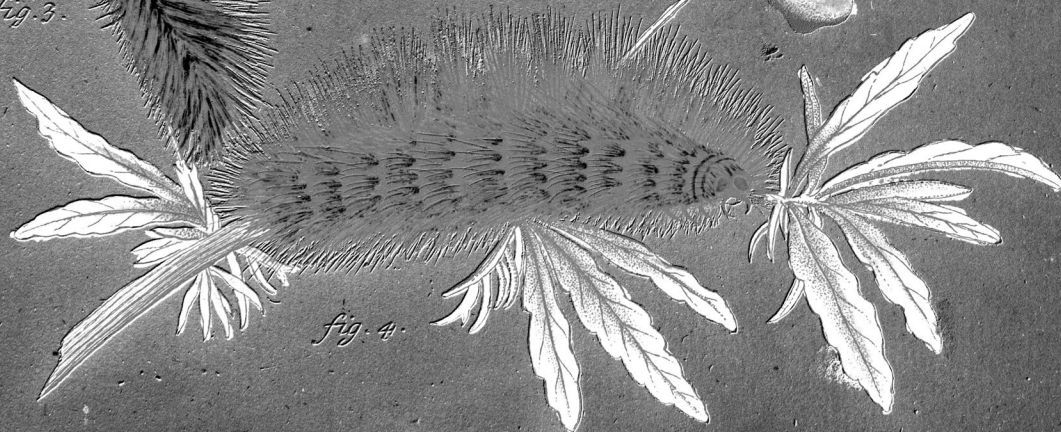


fig. 4.



fig. 5.

Phalaen. europ.

Noctuae Spiril. fig. 1. mas. fig. 2. fem. fig. 3. 4. larvae. fig. 5. chrysal.

Matronula. Linn. Sp. 92.

Winkler's Vermw.

I. C. Bock sc.



fig. 1.



fig. 2.



fig. 3.

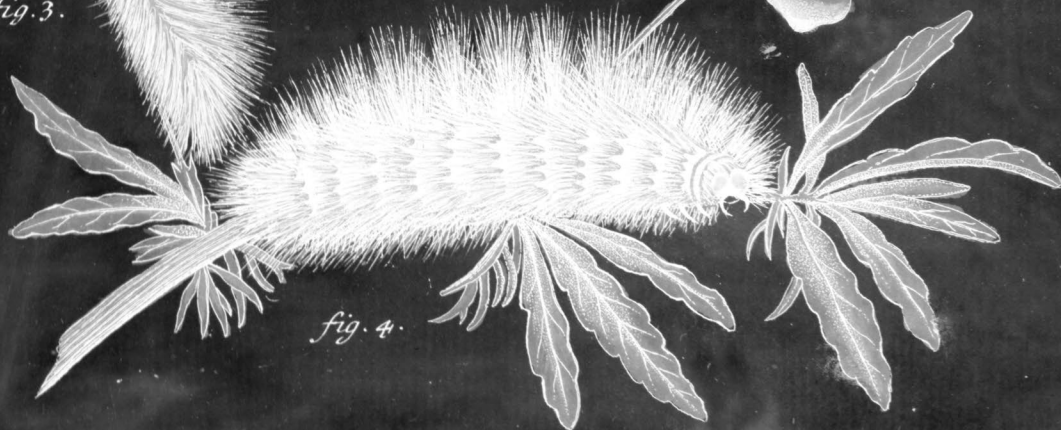


fig. 4.



fig. 5.

Phalaen. europ.

Noctuae Spiril. fig. 1. mas. fig. 2. foem. fig. 3. 4. larvae. fig. 5. chrysal.

Matronula. Lin. Sp. 92.

Phalaena europaea

I. C. Boeck ft.



fig. 1.



fig. 2.



fig. 3.

fig. 4.



fig. 5.

Phalaen. europ.

Noctuae Spiril. fig. 1. mas. fig. 2. foem. fig. 3. 4. larvae. fig. 5. chrysal.

Matronula. Lin. Sp. 92.

Phyctis *basimata*

I. C. Boeck. sc.

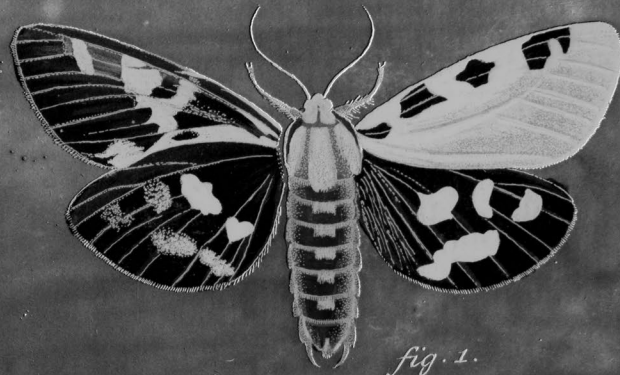


fig. 1.

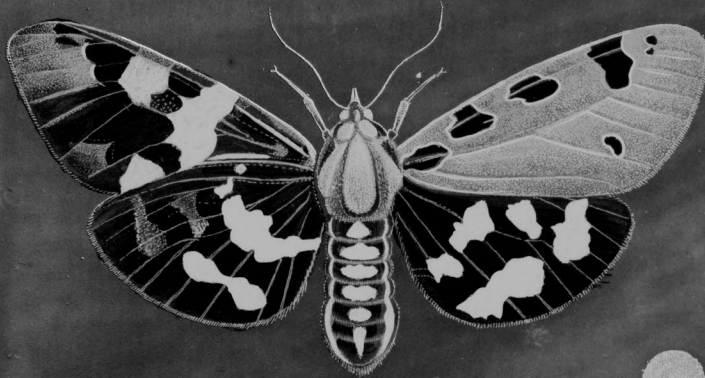


fig. 2.

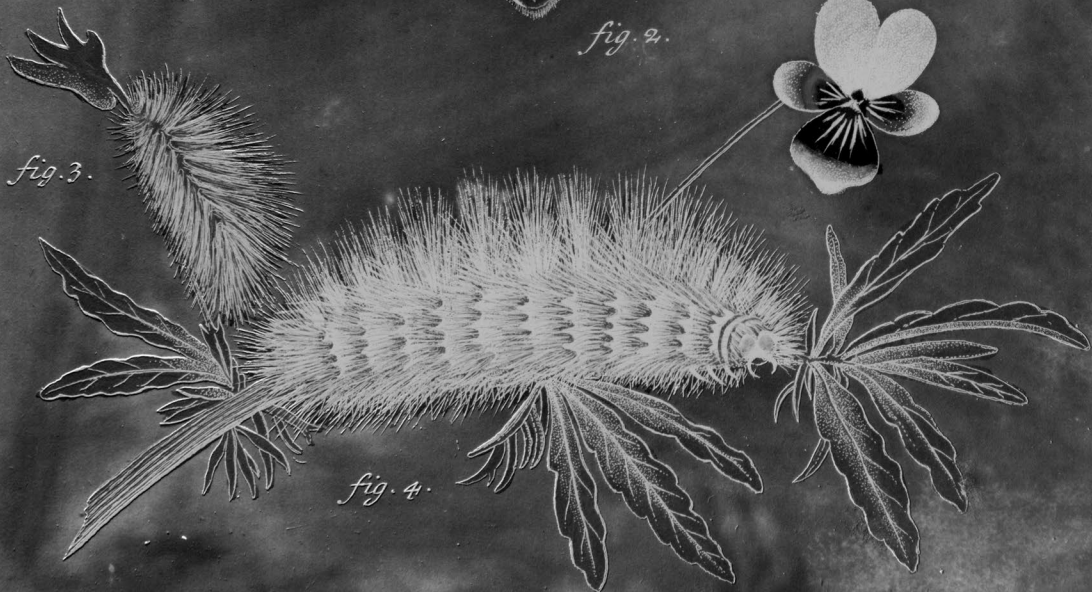


fig. 3.

fig. 4.

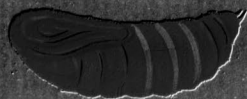
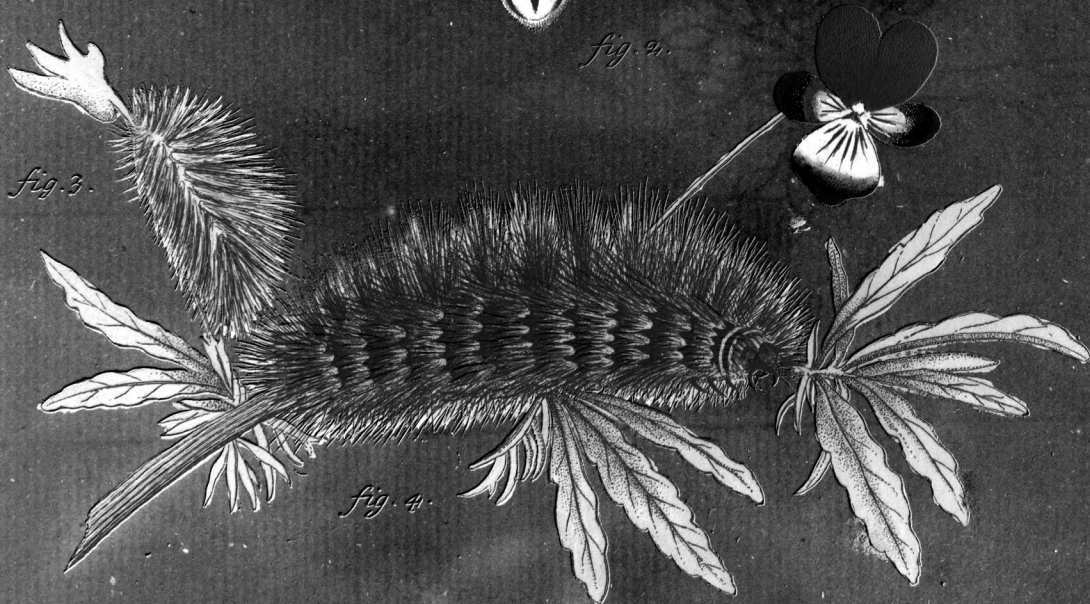
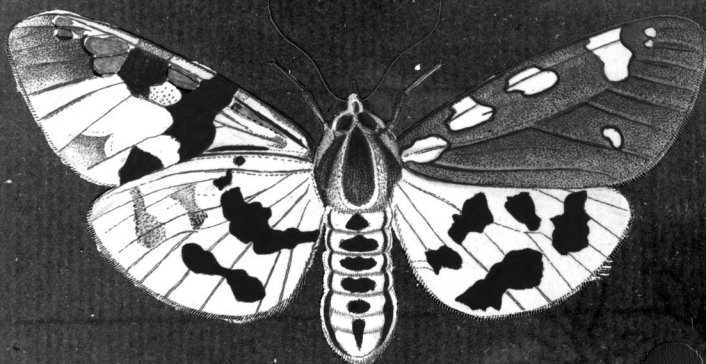
fig. 5.

Phalaen. europ.

Noctuae Spiril. fig. 1. mas. fig. 2. foem. fig. 3. 4. larvae. fig. 5. chrysal.

Matronula. Linn. Sp. 92.

I. C. Bock. sc.



Phalaen. europ.

Noctuae Spiril. fig. 1. mas. fig. 2. fem. fig. 3. 4. larvae. fig. 5. chrysal.

Matronula. Latr. Sp. 92.

I. C. Bock sc.

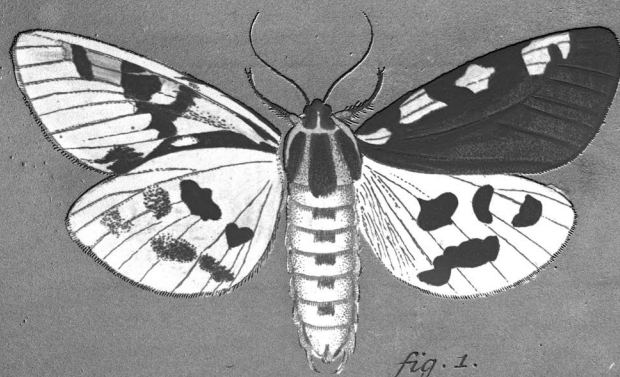


fig. 1.



fig. 2.

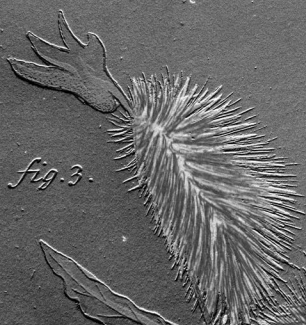


fig. 3.

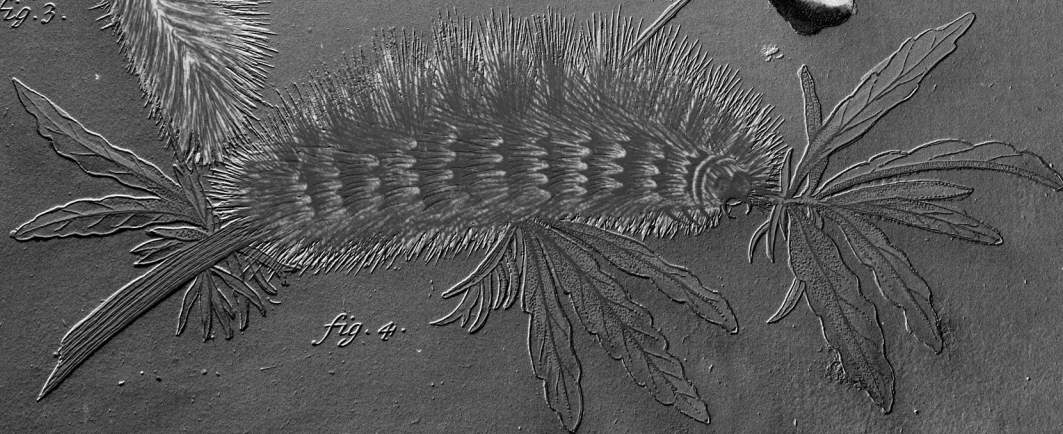


fig. 4.

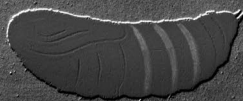


fig. 5.

Phalaen. europ.

Noctuae Spiril. fig. 1. mas. fig. 2. fem. fig. 3. 4. larvae. fig. 5. chrysal.

Matronula. Linn. Sp. 92.
Waldsch. & Germ.

I. C. Bock sc.

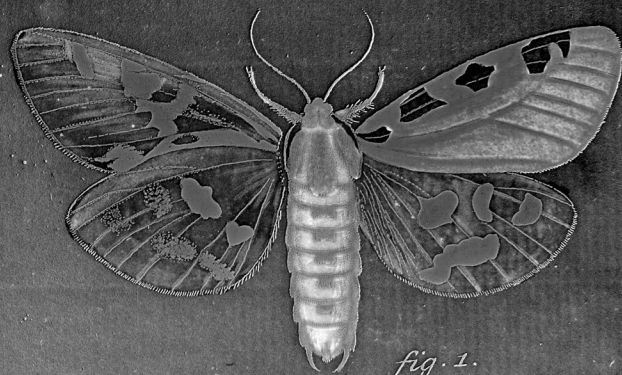


fig. 1.



fig. 2.

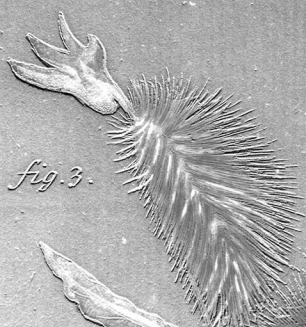


fig. 3.

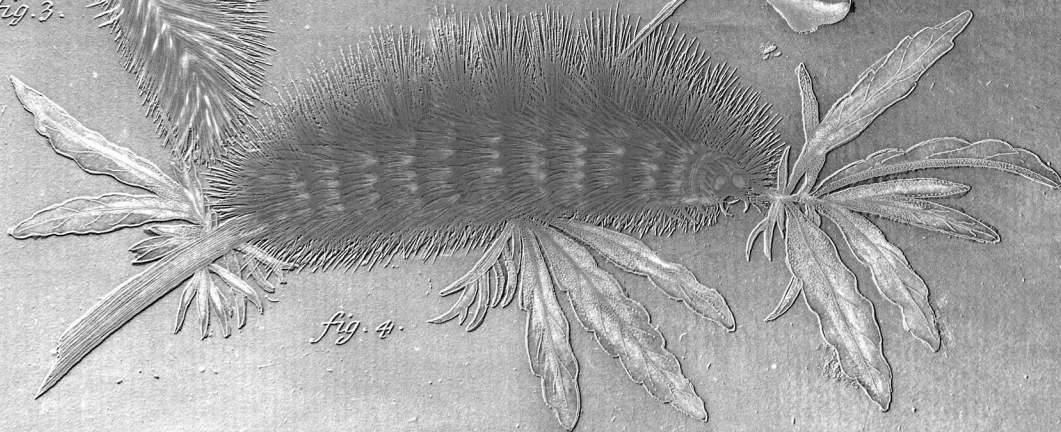


fig. 4.



fig. 5.

Phalaen. europ.

Noctua spiritalis. fig. 1. mas. fig. 2. fem. fig. 3. 4. larvae. fig. 5. chrysalis.

Matronula. Lin. Sp. 92.

I. C. Boeck. sc.



fig. 1.



fig. 2.



fig. 3.



fig. 4.



fig. 5.

Phalaen. europ.

Noctuae Spiril. fig. 1. mas. fig. 2. foem. fig. 3. 4. larvae. fig. 5. chrysal.

Matronula. Lin. Sp. 92.

I. C. Boeck. sc.



fig. 1.



fig. 2.



fig. 3.



fig. 4.



fig. 5.

Phalaen. europ.

Noctuae Spiril. fig. 1. mas. fig. 2. foem. fig. 3. 4. larvae. fig. 5. chrysal.

Matronula. Lin. Sp. 92.

I. C. Boeck fe.



fig. 1.



fig. 2.



fig. 3.



fig. 4.



fig. 5.

Phalaen. europ.

Noctuae Spiril. fig. 1. mas. fig. 2. foem. fig. 3. 4. larvae. fig. 5. chrysal.

Matronula. Lin. Sp. 92.
Matronula

I. C. Boeck. sc.



fig. 1.



fig. 2.



fig. 3.



fig. 4.



fig. 5.

Phalaen. europ.

Noctuae Spiril. fig. 1. mas. fig. 2. foem. fig. 3. 4. larvae. fig. 5. chrysal.

Matronula. Lin. Sp. 92.

I. C. Boeck. sc.



fig. 1.



fig. 2.



fig. 3.



fig. 4.



fig. 5.

Phalaen. europ.

Noctuae Spiril. fig. 1. mas. fig. 2. foem. fig. 3. 4. larvae. fig. 5. chrysal.

Matronula. Lin. Sp. 92.
Angelic. sarracenia

I. C. Boeck. sc.



fig. 1.



fig. 2.



fig. 3.



fig. 4.



fig. 5.

Phalaen. europ.

Noctuae Spiril. fig. 1. mas. fig. 2. foem. fig. 3. 4. larvae. fig. 5. chrysal.

Matronula. Lin. Sp. 92.
Angelic. sarracul.

I. C. Boeck. sc.



fig. 1.



fig. 2.



fig. 3.



fig. 4.



fig. 5.

Phalaen. europ.

Noctuae Spiril. fig. 1. mas. fig. 2. foem. fig. 3. 4. larvae. fig. 5. chrysal

Matronula. Lin. Sp. 92.

I. C. Boeck. sc.



fig. 1.



fig. 2.



fig. 3.



fig. 4.



fig. 5.

Phalaen. europ.

Noctuae Spiril. fig. 1. mas. fig. 2. foem. fig. 3. 4. larvae. fig. 5. chrysal

Matronula. Lin. Sp. 92.

Phalaena europaea

I. C. Boeck. sc.



fig. 1.



fig. 2.



fig. 3.



fig. 4.



fig. 5.

Phalaen. europ.

Noctuae Spiril. fig. 1. mas. fig. 2. foem. fig. 3. 4. larvae. fig. 5. chrysal.

Matronula. Lin. Sp. 92.

Angelic. baccata

I. C. Boeck. sc.



fig. 1.



fig. 2.



fig. 3.



fig. 4.



fig. 5.

Phalaen. europ.

Noctuae Spiril. fig. 1. mas. fig. 2. foem. fig. 3. 4. larvae. fig. 5. chrysal.

Matronula. Lin. Sp. 92.

Phalaena europaea

I. C. Boeck. sc.



fig. 1.



fig. 2.



fig. 3.



fig. 4.



fig. 5.

Phalaen. europ.

Noctuae Spiril. fig. 1. mas. fig. 2. foem. fig. 3. 4. larvae. fig. 5. chrysal.

Matronula. Lin. Sp. 92.

Phalaena europaea

I. C. Boeck. sc.

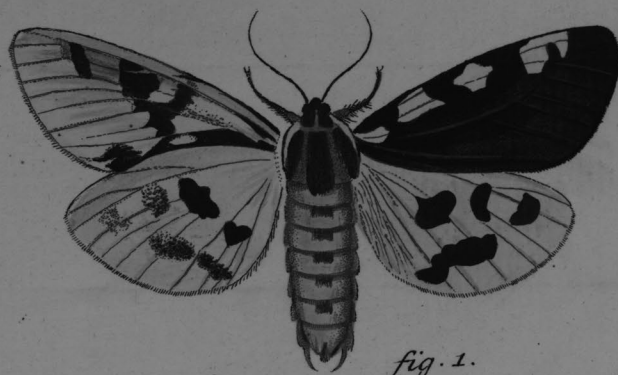


fig. 1.

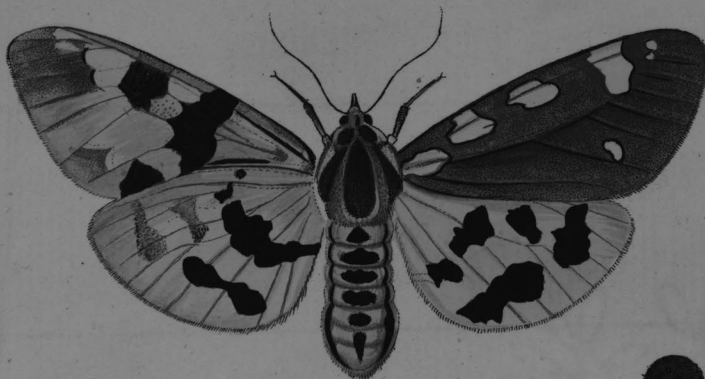


fig. 2.



fig. 3.



fig. 4.



fig. 5.

Phalaen. europ.

Noctuae Spiril. fig. 1. mas. fig. 2. foem. fig. 3. 4. larvae. fig. 5. chrysal.

Matronula. Lin. Sp. 92.

Phalaena europaea

I. C. Boeck. sc.

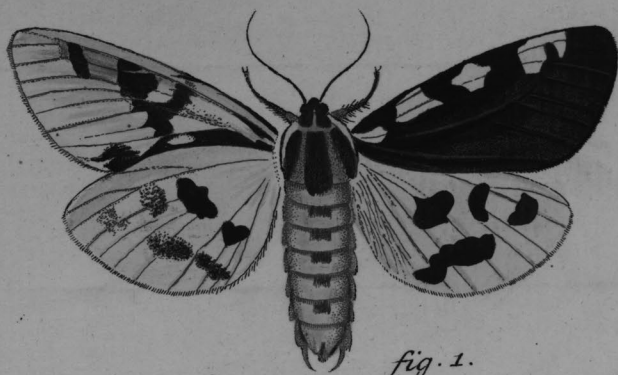


fig. 1.

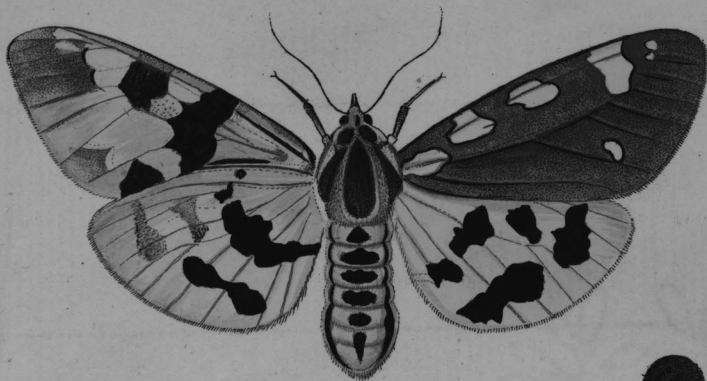


fig. 2.



fig. 3.

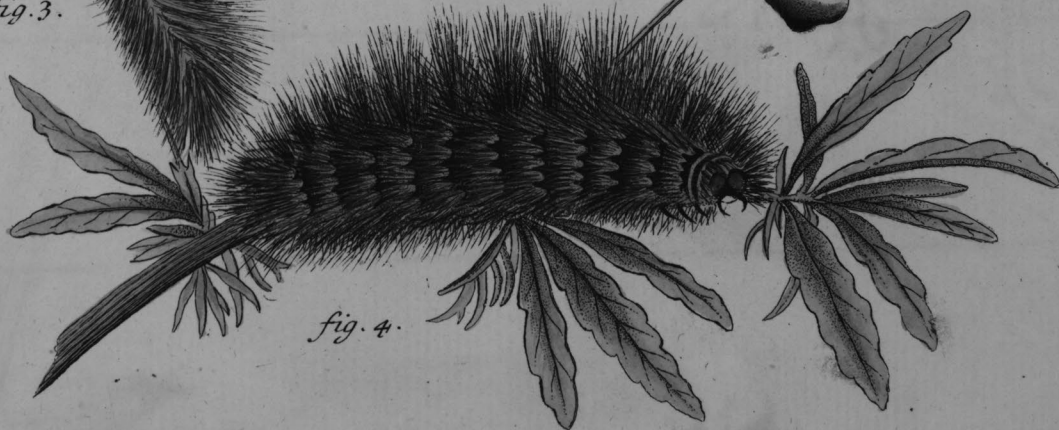


fig. 4.



fig. 5.

Phalaen. europ.

Noctuae Spiril. fig. 1. mas. fig. 2. foem. fig. 3. 4. larvae. fig. 5. chrysal.

Matronula. Lin. Sp. 92.

Phycolia brunnata

I. C. Boeck. sc.

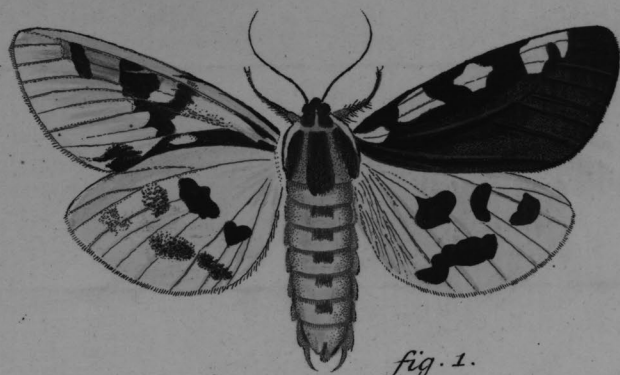


fig. 1.

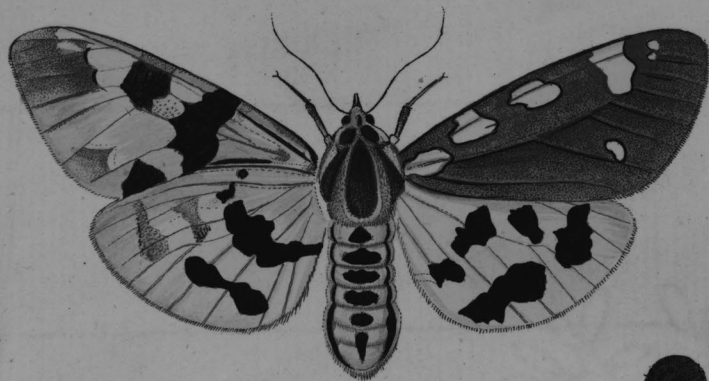


fig. 2.



fig. 3.

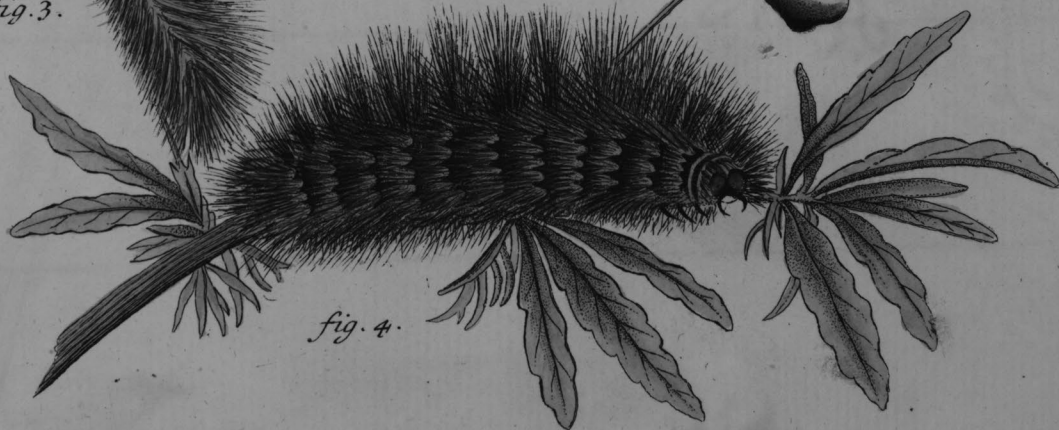


fig. 4.



fig. 5.

Phalaen. europ.

Noctuae Spiril. fig. 1. mas. fig. 2. foem. fig. 3. 4. larvae. fig. 5. chrysal.

Matronula. Lin. Sp. 92.

Phycolia brassicae

I. C. Bocke sc.

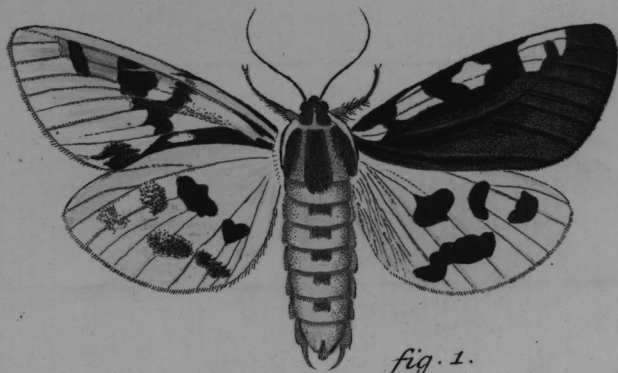


fig. 1.

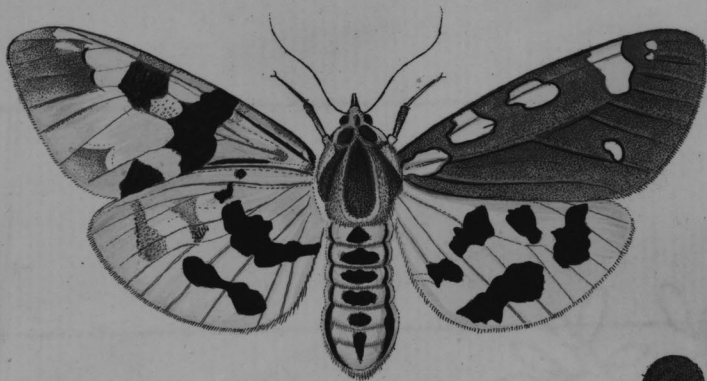


fig. 2.



fig. 3.

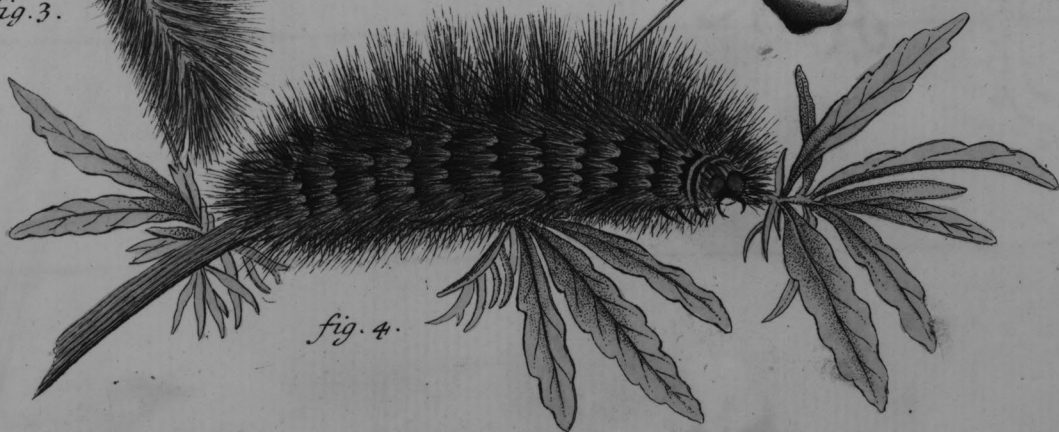


fig. 4.



fig. 5.

Phalaen. europ.

Noctuae Spiril. fig. 1. mas. fig. 2. foem. fig. 3. 4. larvae. fig. 5. chrysal.

Matronula. Lin. Sp. 92.

Phalaena europaea

I. C. Boeck. sc.

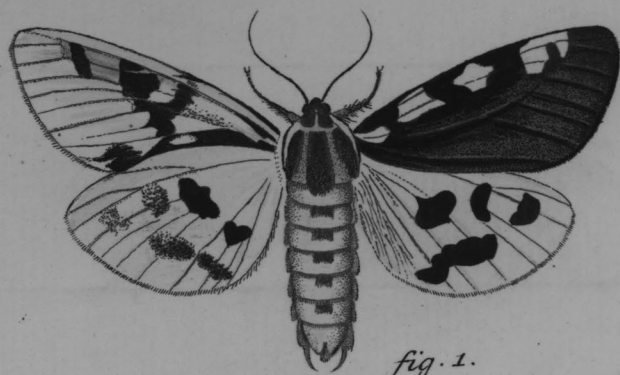


fig. 1.

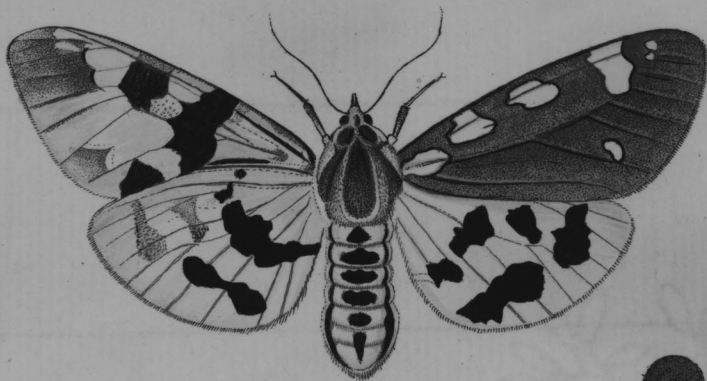


fig. 2.



fig. 3.

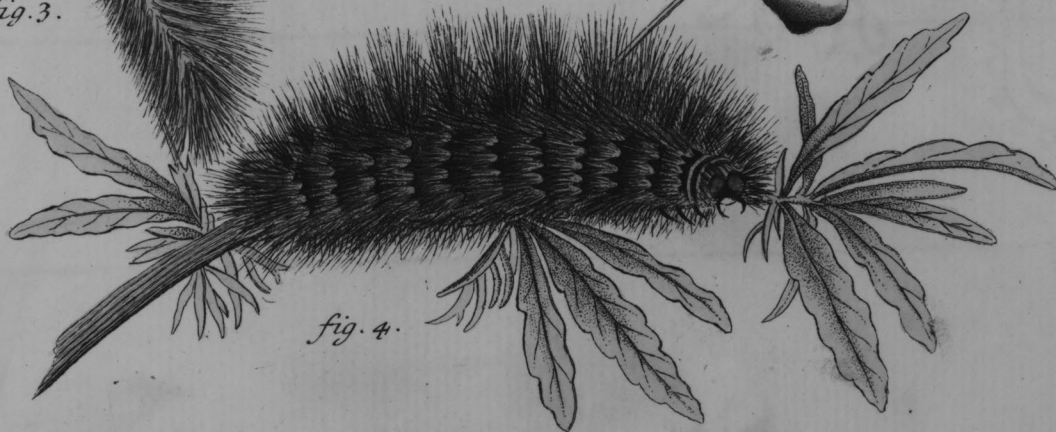


fig. 4.



fig. 5.

Phalaen. europ.

Noctuae Spiril. fig. 1. mas. fig. 2. foem. fig. 3. 4. larvae. fig. 5. chrysal.

Matronula. Lin. Sp. 92.

Phalaena europaea

I. C. Boeck. sc.

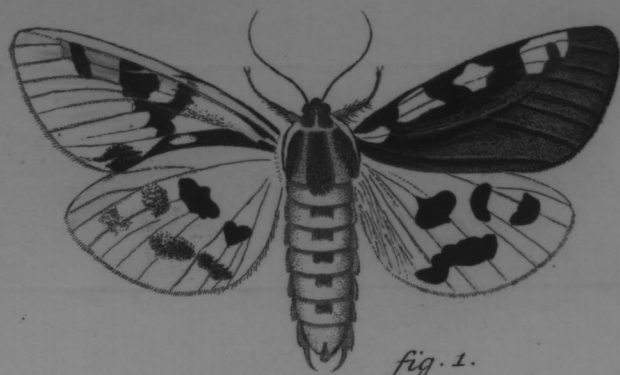


fig. 1.

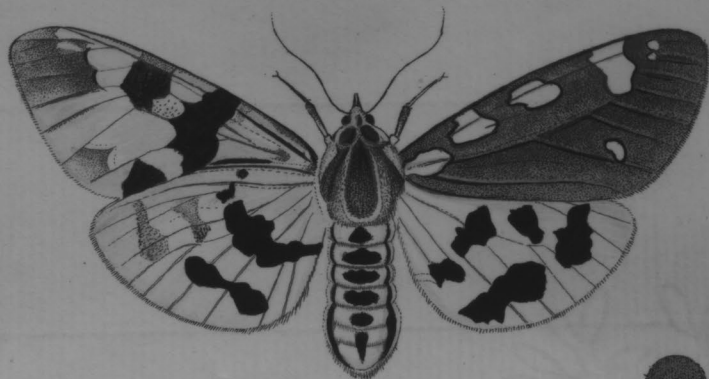


fig. 2.



fig. 3.

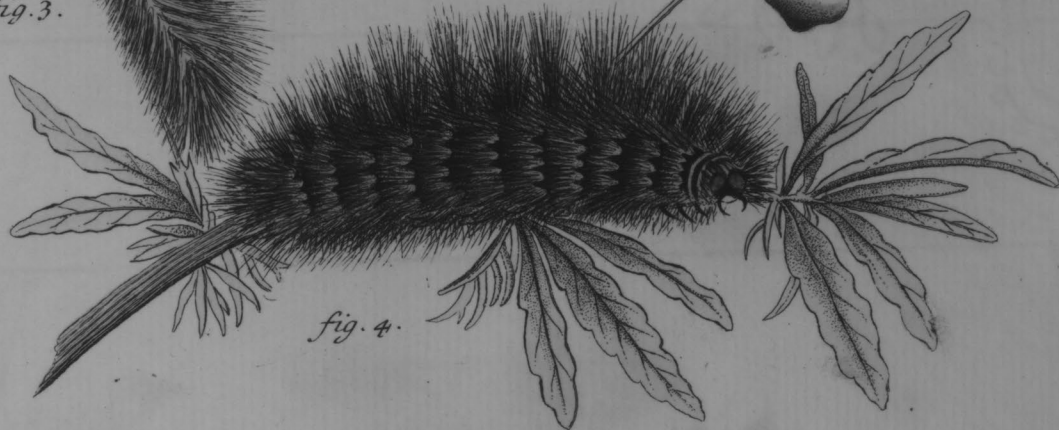


fig. 4.



fig. 5.

Phalaen. europ.

Noctuae Spiril. fig. 1. mas. fig. 2. foem. fig. 3. 4. larvae. fig. 5. chrysal.

Matronula. Lin. Sp. 92.

Phalaena europaea

I. C. Boeck. sc.